

Bulk Fuel & Marine Terminal Tour

Tuesday, September 22, 2010

1:30 p.m. – 5:00 p.m.*



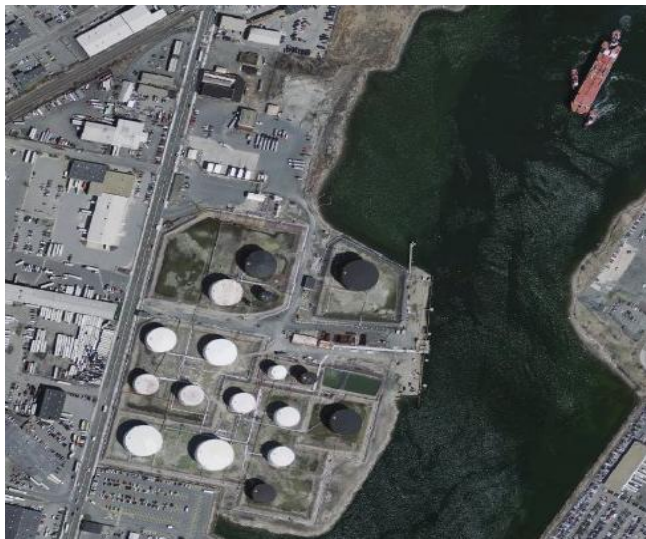
Join us for a facility tour of Gulf Oil Limited Partnership's Bulk Fuel and Marine Terminal located in Chelsea, MA



Space is limited so sign up today!

The Gulf Oil Limited Partnership Chelsea Terminal is responsible for providing a significant percentage of petroleum products to the New England region. This fifty-acre facility has operated as a bulk storage petroleum distribution terminal since 1951 and has a total storage capacity of over one million barrels. The facility consists of 21 aboveground storage tanks, a 7-bay truck loading rack, and a marine terminal to facilitate receipts via Boston Harbor.

The terminal is equipped with state-of-the-art security monitoring and a vacuum-assist vapor recovery unit, which is the first of its kind in operation in the New England region. The unit has a design capacity of two million gallons per day with a stack emissions rate of less than 2.0 milligrams per liter (mg/l). In addition, the unit is designed to completely eliminate fugitive emissions from truck loading operations at the facility.



Tentative schedule:

- Bus will leave at 1:30 p.m. from the Westin Boston Waterfront Hotel
- Arrive at the Chelsea Terminal by 2:00 p.m.
- Complete facility tour and depart the Gulf Terminal by 4:30 p.m.
- Return to Westin Boston Waterfront Hotel by 5:00 p.m.

*Please note that this is concurrent with other sessions.

There is a \$15 fee associated with this tour. Pre-registration is required.
(Please check the appropriate box on the registration form or online.)