

# South Dakota Triad Challenge

## Demonstration Project for Small Sites

SD Petroleum Release Compensation Fund  
&  
Columbia Technologies, LLC

# The Challenge

- Five “legacy” UST Sites
- Mostly gas stations
- Some sites over 10 years old!
- Approach – Use Triad to manage uncertainty & move toward closure
  - Systematic Planning
  - Real-Time Measurement Systems
  - Dynamic Work Strategies

# Background

- Five sites selected across central & eastern South Dakota
- Sites consisted of four that were previously assessed, and one with no previous assessment
- Avg. costs incurred at sites prior to study (3 sites) = \$111,588.06 / site.

# Background (cont.)

- Selected Direct-Push and Direct Sensing technology for the rapid field analysis.
- Membrane Interface Probe (MIP) for data measurements.
- Team Members consisted of personnel from PRCF, DENR, Consulting firms, Columbia Tech. and Matrix Environmental.

# Systematic Planning Meeting

- All Team Members met and discussed the general objectives and principals of the Triad Process.
- A brief history of each case was given. Information previously gathered from the site was distributed.
- Assisted by independent facilitator.

# Systematic Planning Meeting (cont.)

- Data gaps and other uncertainties were discussed.
- Specific objectives for each release site were clearly established and written down.
- A clear chain-of-command was established.

# Systematic Planning Meeting (cont.)

- **Some apprehension was apparent during the Systematic Planning Meeting.**
- **This was primarily due to the reliance on field analyses and only limited “quality assured lab data”.**

# Systematic Planning (cont.)

## The "Commitment"

- Team members agreed to stay on site until they got all the data they needed to address objectives in the work plan.
- No one leaves until all are "happy".
- No disputes on the need for additional data.

# Field Work using Real-Time Measurements

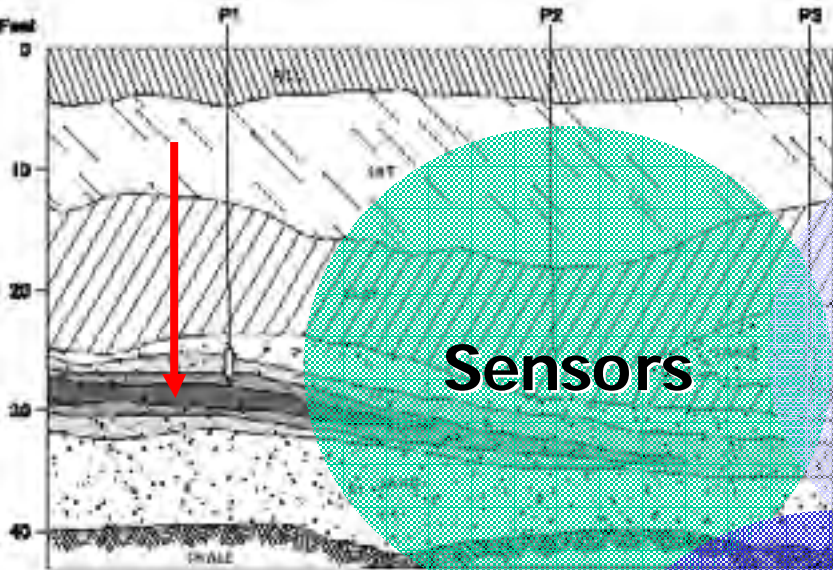
- Direct-push technology and direct sensing methods.
- Real-time Logs were used to decide next boring location.
- Data was uploaded into 3-dimensional maps at the end of each day.



# Real-Time Measurement Tools

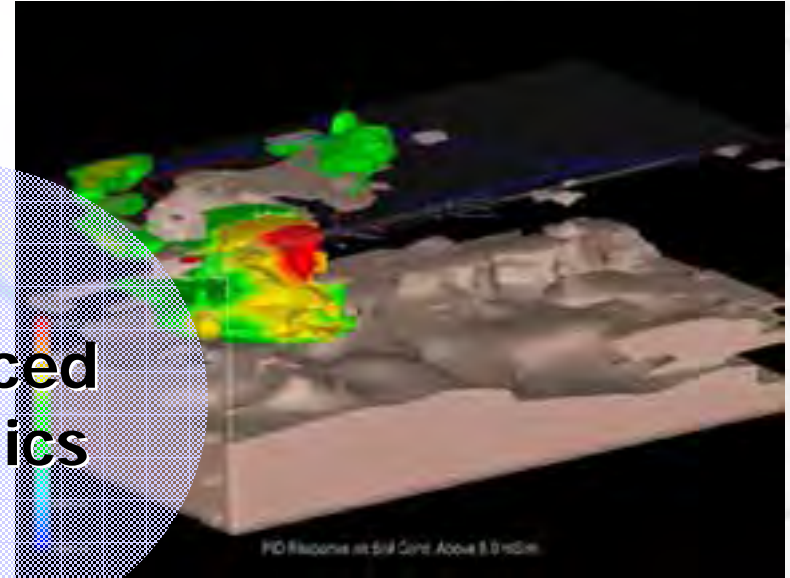
- **Direct Sensing**
  - Membrane Interface Probe w/ Electrical Conductivity
- **SmartData Solutions®**
  - Internet link to the field
  - Frequent data uploads
  - 3D graphics
  - Measurement of uncertainty
- **SmartScan™ screen**
  - MtBE, TBA, and EDB
- **Confirmatory soil & groundwater samples**
- **“Real time” lab analyses**

# SmartData Solutions® (Patent Pending)



Sensors

Advanced Analytics



Internet Delivery

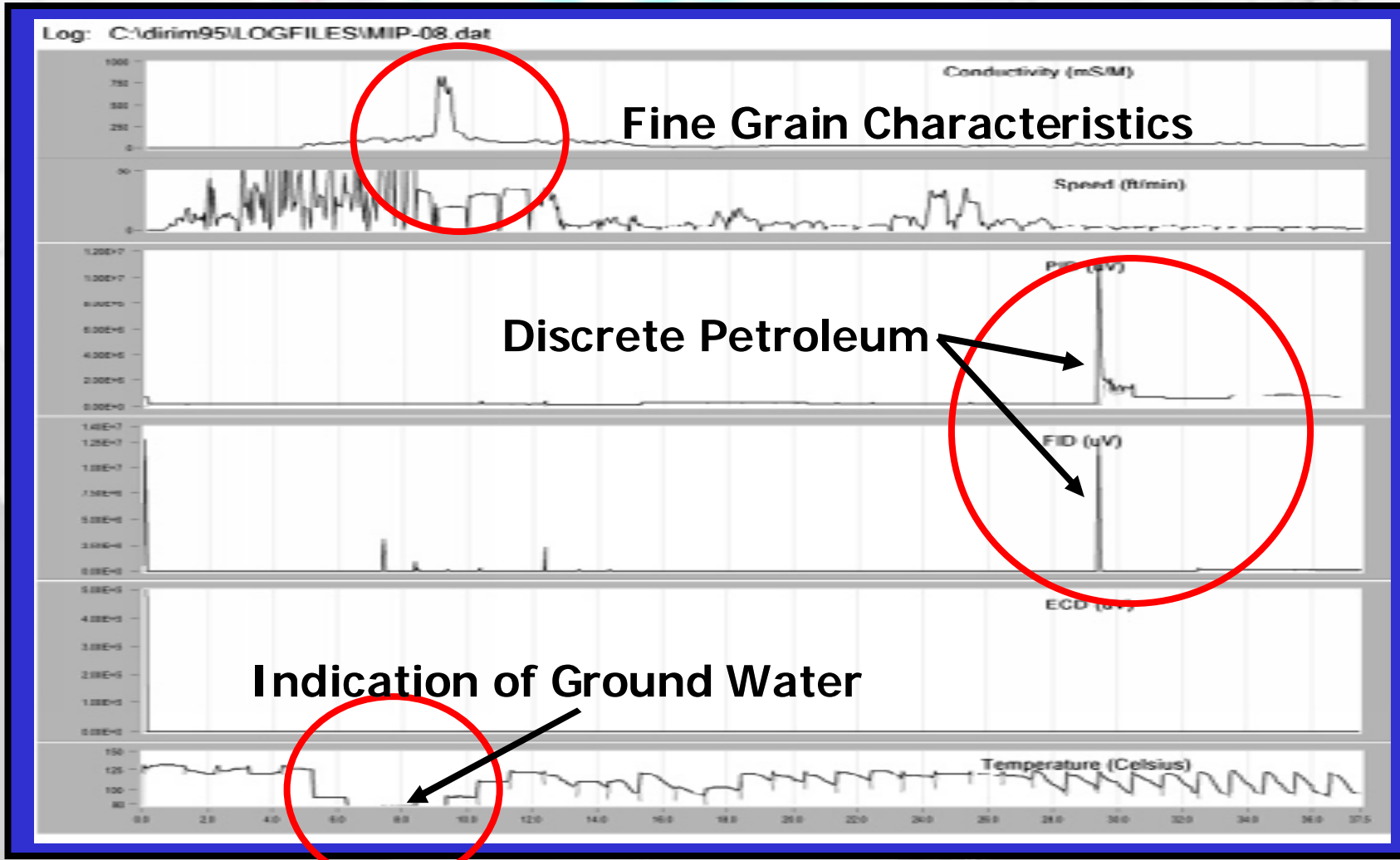
Cycle Time = Hours

# Membrane Interface Probe



- Continuous vertical profile of subsurface
- High data density – 20 data points/ft
- Real time information
- Responds to VOCs at sub-ppm levels
- Electrical conductivity provides a measurement of soil characteristics

# Real Time Data



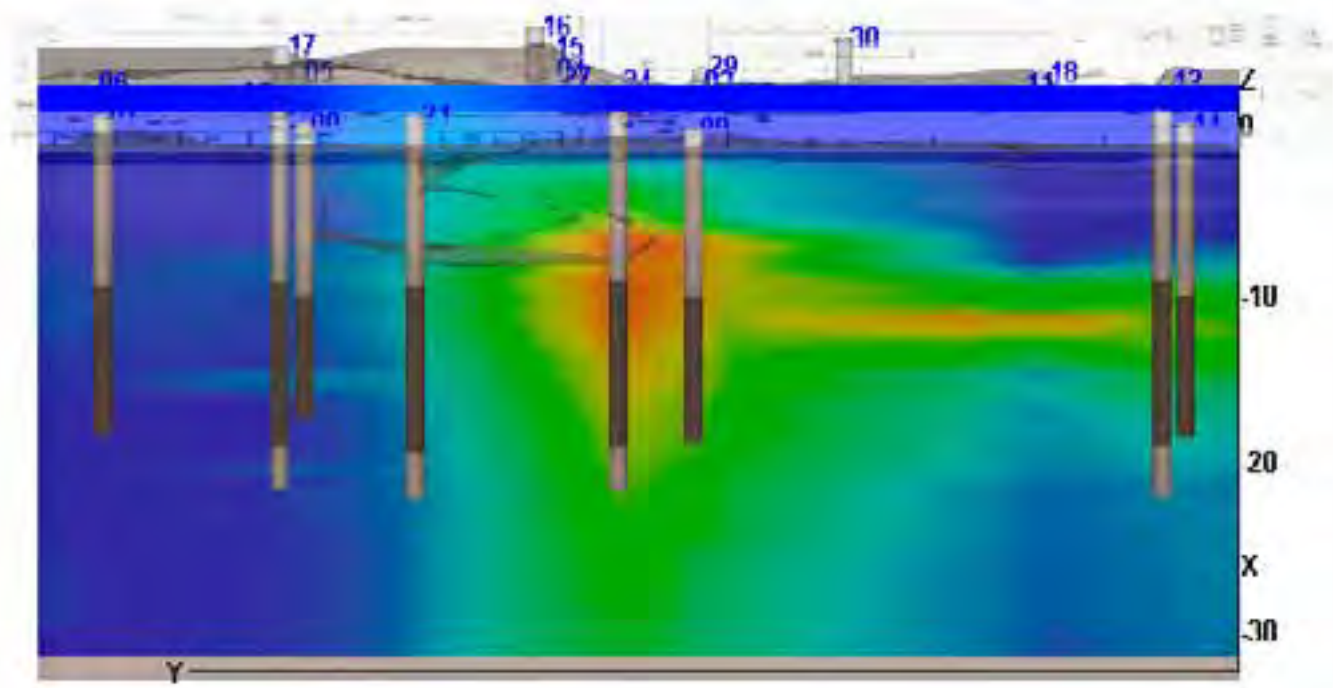
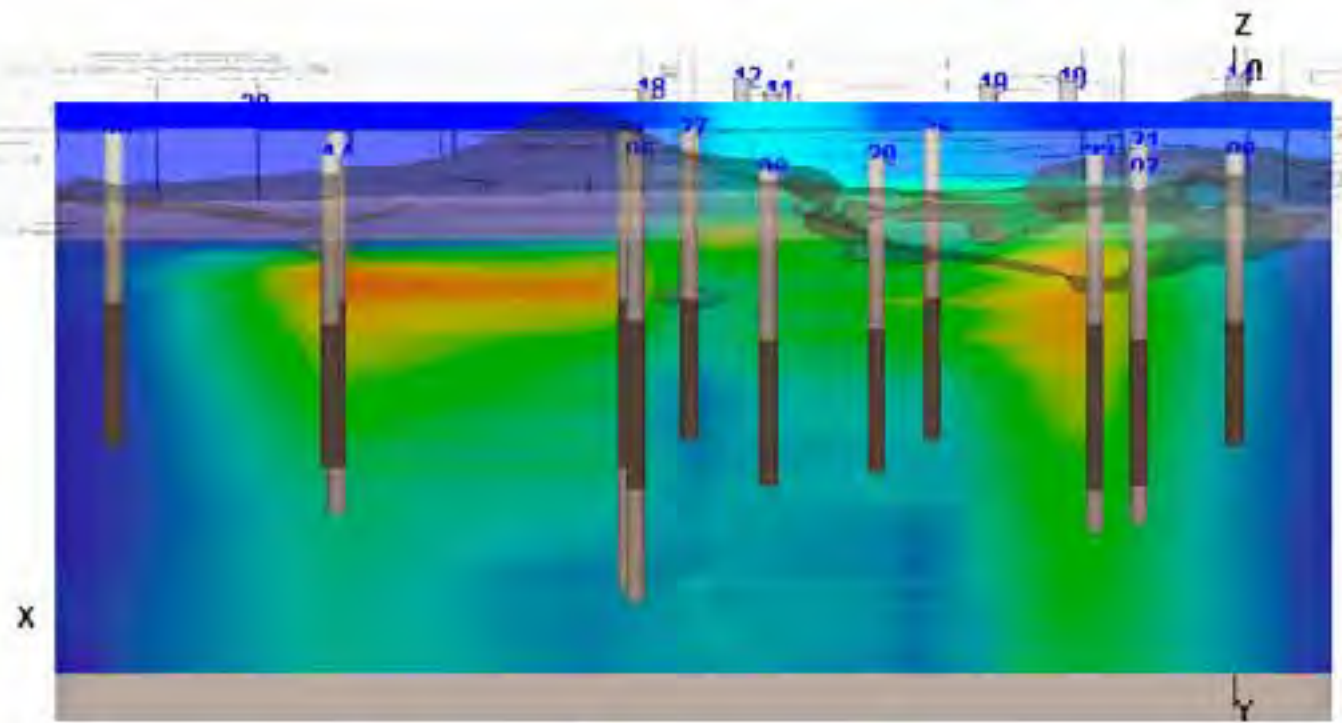
# Generic Protocol

1. In-situ performance check of sensors in known source area
2. Verification of background
3. Rapid vertical and horizontal delineation of contaminant plume – approx 300-ft of data each day
4. Determine any impact to receptors
5. Confirmatory soil and groundwater sampling
6. Screen for MtBE, TBA, and EDB
7. Daily update of 2D/3D maps via Internet link to support decision making in the field
8. Off-site laboratory analyses

**All Triad project team members present in the field**

# Field Work using Real-Time Measurements

- Team members met every morning to discuss the results of the previous day's data assessment and to review the objectives for the site.



# Real-Time Measurements

- Real-Time measurements allowed for "Real-Time" decisions.
- On-site decisions and were based on vast amount of field analysis... not small amounts of quality assured lab data
- Allowed for on-site planning, thus minimizing the need for multiple site visits to gather the necessary information & fill data gaps.

# Real Time Measurements Using Direct Push and Direct Sensing

- Provided a more detailed site conceptual model (SCM) or “picture” of what has or is occurring at a site.
- Analogy....

# SCM using conventional methods



# SCM using real-time measurements



# Dynamic Work Plan

- Based on the results of field analyses, quick, on-site decisions were made as needed.
- Each morning, the results from the previous day were evaluated by team members and compared to objectives.
- Changes were made as necessary.

# Team Decision Making



# T&T Standard



# Assessment Planning

- **Team meeting (conference call) to set site specific objectives and concerns**
- **Establish site specific website**
  - Password protected
  - Load site maps
  - Load location of existing wells
  - Load known historical data
  - Load know underground utilities
- **Build initial 3D Site Conceptual Model**

## UST Tier I Requirements

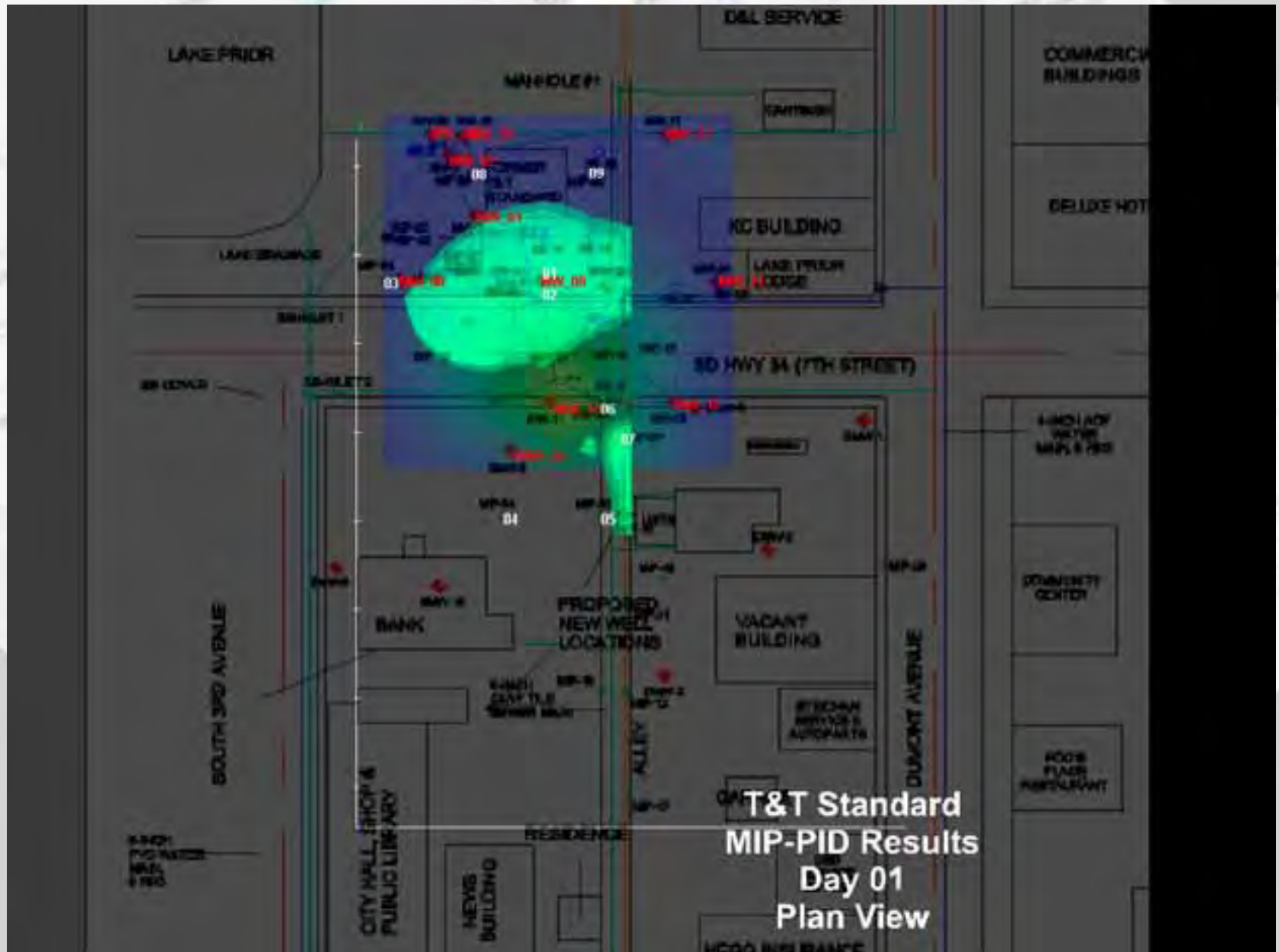
- ✓ **Standardized scope of work**
- ✓ **Locate all private and public water wells**
- ✓ **Note current use of the site**
- ✓ **Provide copy of applicable portion of tax map**
- ✓ **Locate all underground utilities**

# Day 01 – Initial Screening

- Site H&S Briefing
- Verification
  - Underground utilities
  - Receptors
  - Site use
- Direct Sensing Operations
  - UST Area: 2 borings
  - Piping & Dispenser Area: 5 borings
  - Background: 2-4 borings
  - Total: 7-10 borings ~ 300 ft of data
  - Borehole closure
- SmartData Operations
  - GPS all boreholes
  - MIP logs uploaded 2X daily
  - Update 3D model
  - Update website and field

## UST Tier I Requirements

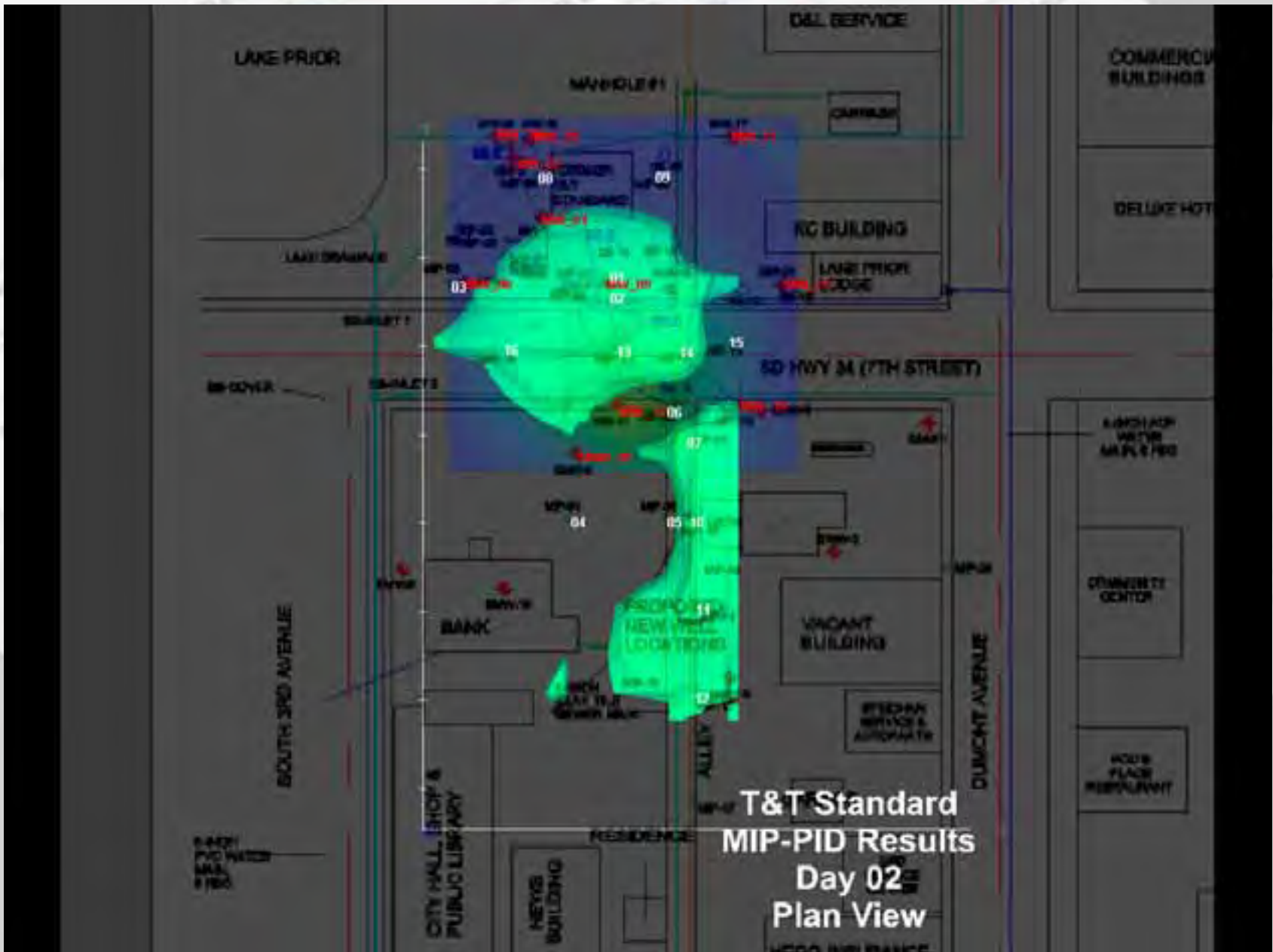
- ✓ Screen identified receptors for hydrocarbons
- ✓ UST Area: 2 borings to 25-ft or to groundwater table
- ✓ Piping & Dispenser Area: 5 borings to 10-feet or to groundwater table
- ✓ Background: 1 boring to 10-ft or to groundwater table
- ✓ Describe lithology for each soil sample
- ✓ Screen for organic vapors
- ✓ Prepare soil boring logs



# Day 02 - Receptors

- **Site H&S Briefing**
- **Direct Sensing Operations**
  - Evaluate impact to receptors
  - Determine if receptors are conduits for HCs
  - 7-10 borings ~ 250 ft
- **SmartData Operations**
  - GPS all boreholes
  - MIP logs uploaded 2X daily
  - Update 3D model
  - Update website and field
- **Triad team review receptor impact and select sample locations**

- **UST Tier I Requirements**
- ✓ **Screen identified receptors for hydrocarbons**

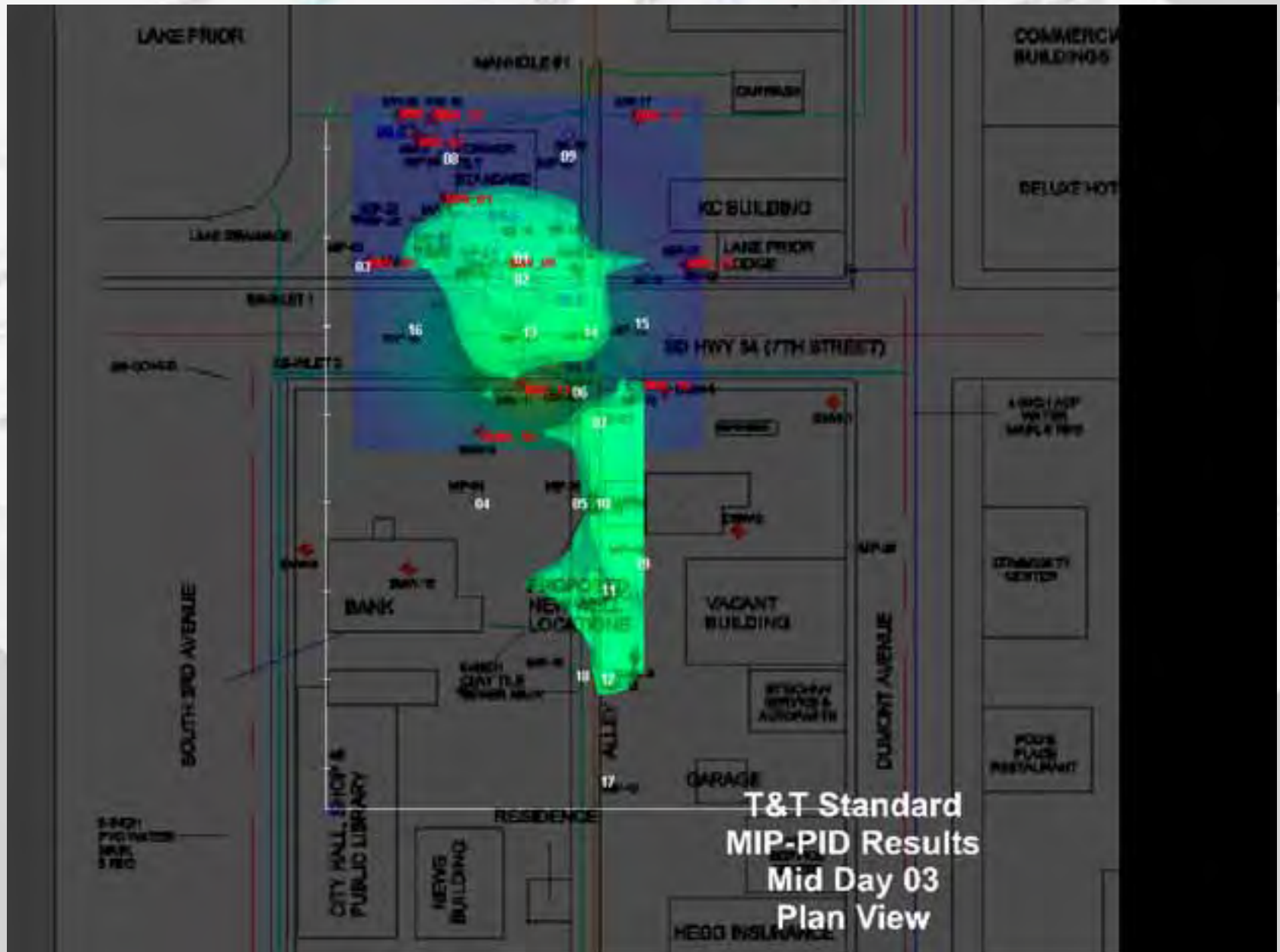


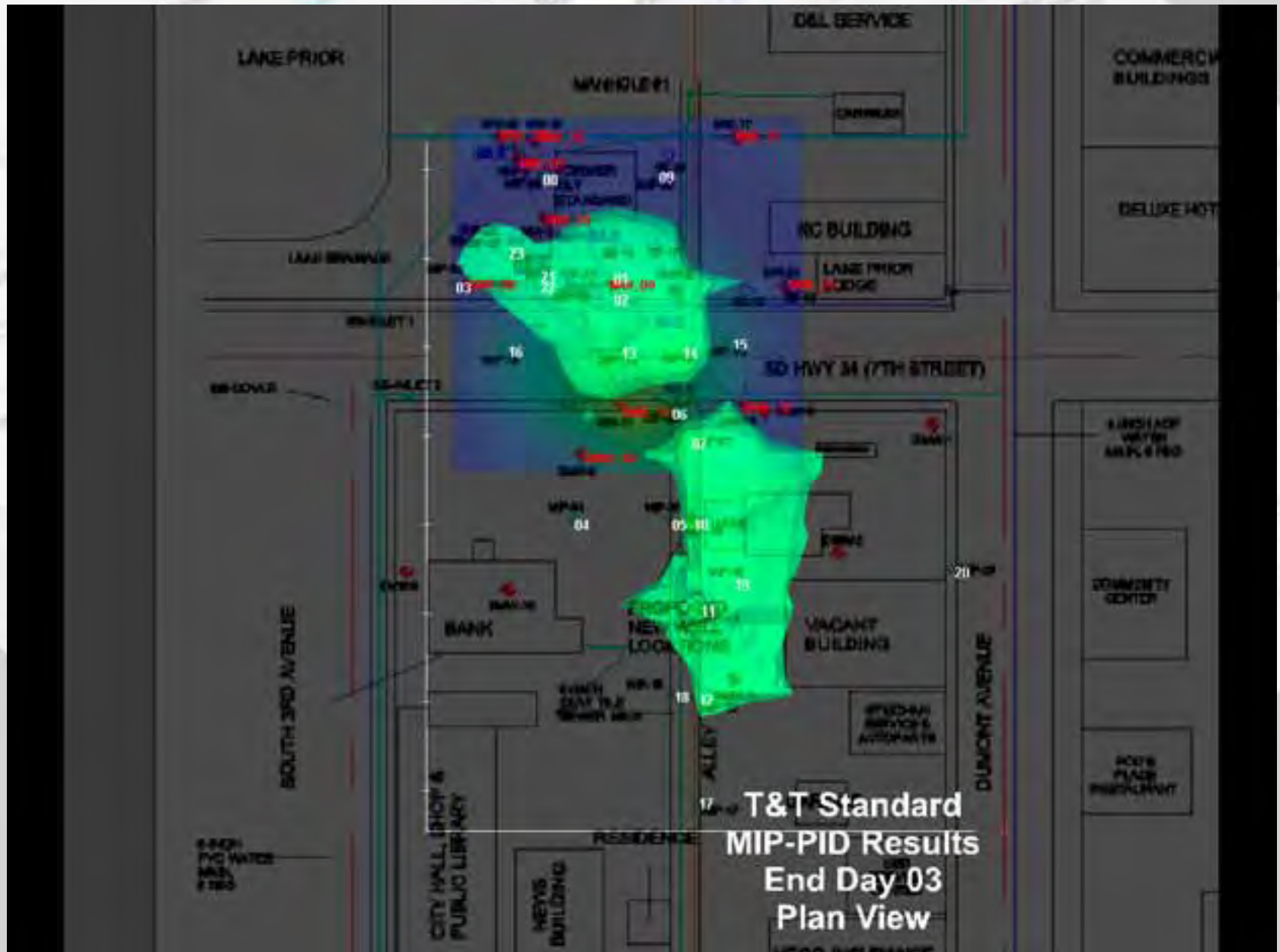
# Day 03 –Verification

- Site H&S Briefing
- Direct Sensing Operations
  - SmartScan™ analysis
- SmartData Operations
  - Update images & model
- Soil Sampling
  - UST Area: 2 borings
  - Piping/Dispenser: 5 borings
  - Background: 1 boring
- Groundwater Sampling
  - All impacted water supply wells within 500-ft
  - Install 3 micro-wells and sample (optional)
- Vapor Sampling
  - Receptor areas with potential for explosive conc
  - Install vapor monitoring implants (optional)

## UST Tier I Requirements

- ✓ UST Area: 2 soil borings to 25-ft or to groundwater table
- ✓ Piping & Dispenser Area: 5 borings to 10-feet or to groundwater table
- ✓ Background: 1 soil boring to 10-ft or to groundwater table
- ✓ Describe lithology for each soil sample
- ✓ Screen for organic vapors
- ✓ Prepare soil boring logs



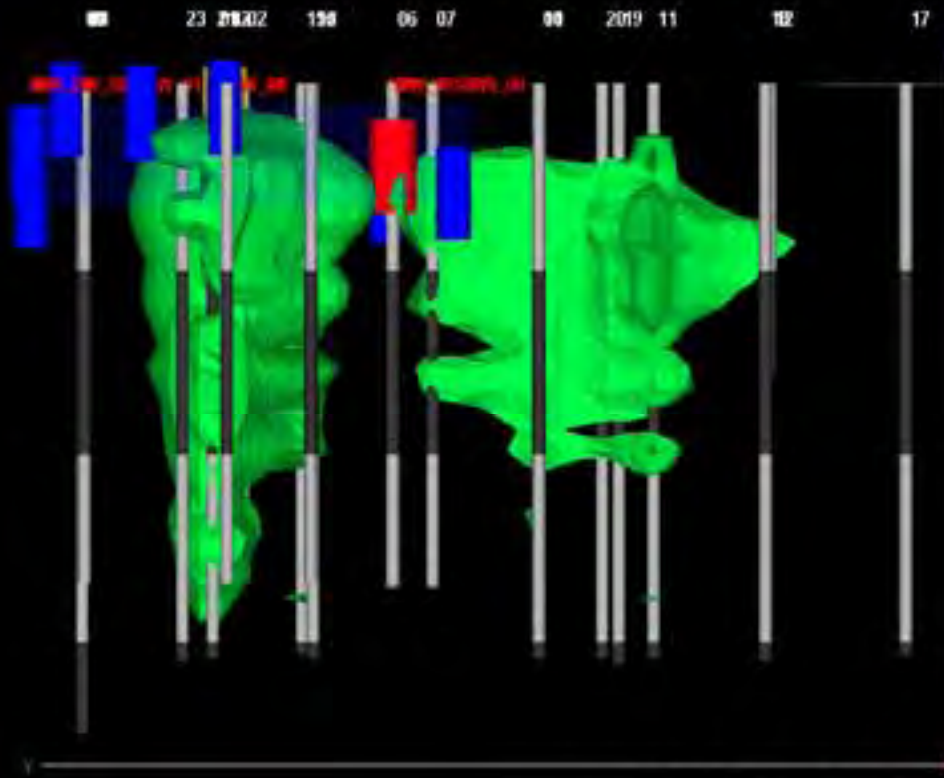


# Day 04 –Ground-Water Wells (Optional)

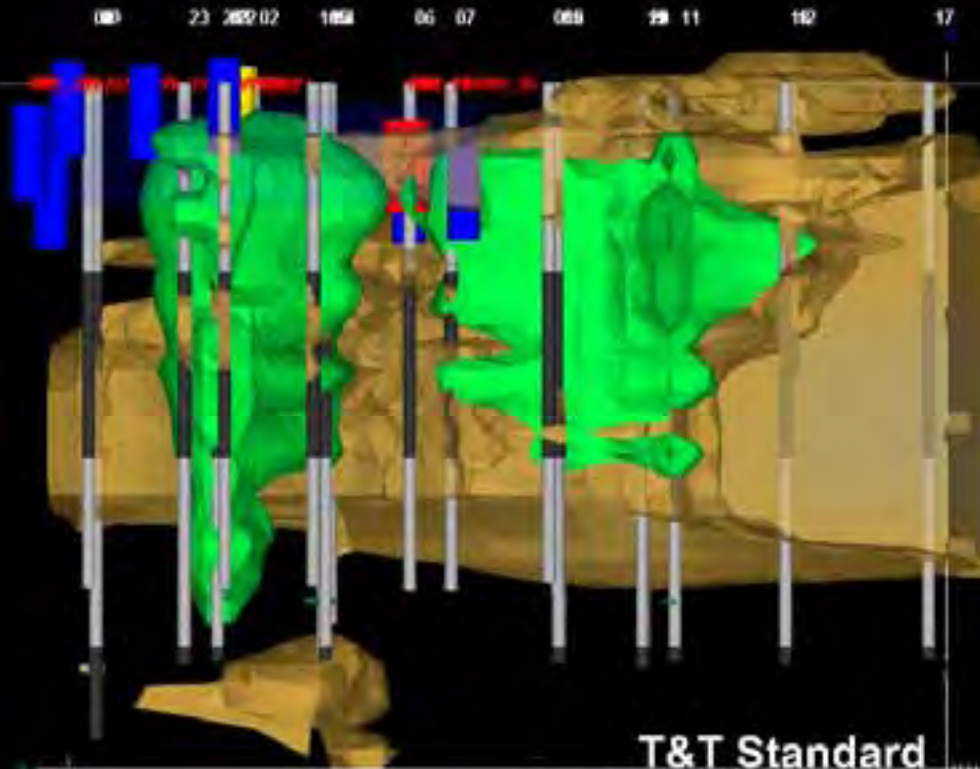
- Site H&S Briefing
- Installation of Monitoring Wells

## UST Tier I Requirements

- ✓ Total of three 2-inch PVC casing wells with 10-ft screens
- ✓ Boring with highest organic vapor response
- ✓ Background soil boring
- ✓ 1 Additional well in a position on the site to determine the direction of ground-water flow AND concentrations of CoC in the source area

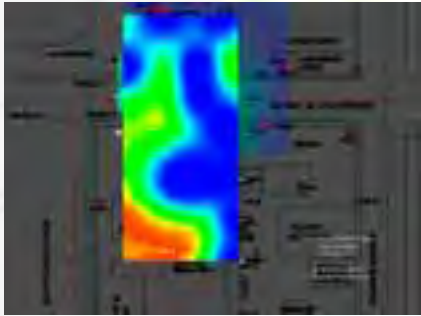


T&T Standard  
 MIP-PID Results  
 w/ MW Data  
 End Day 03  
 View From West

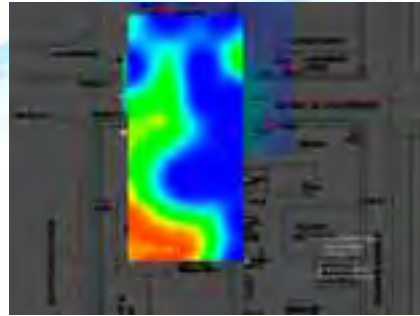


**T&T Standard  
MIP-PID Results  
w/ MW Data  
Soil Cond > 105 mS/m  
End Day 03  
View From West**

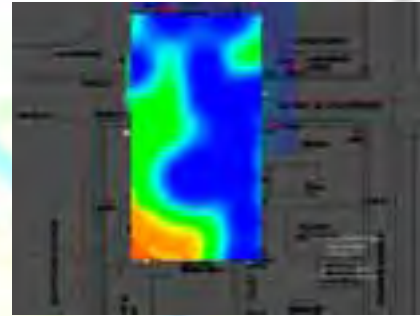
# Managing Uncertainty



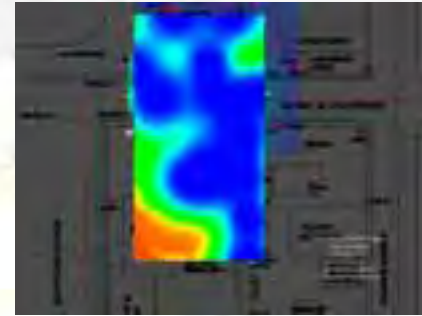
MIP-13



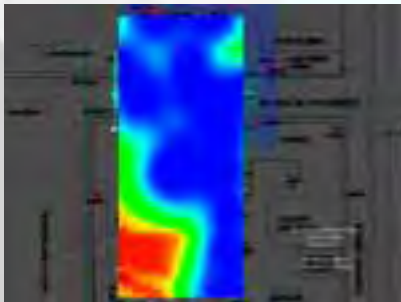
MIP-14



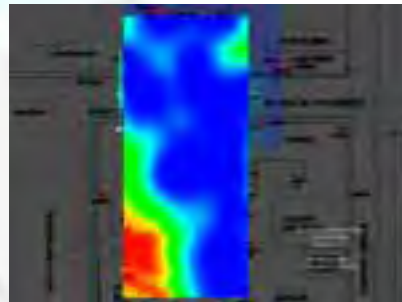
MIP-15



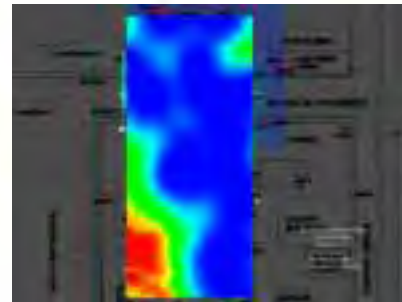
MIP-16



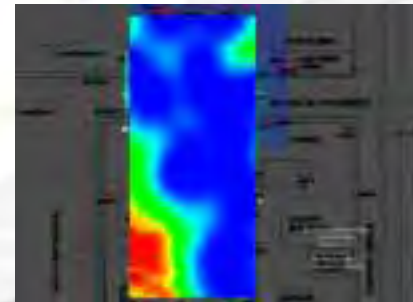
MIP-17



MIP-18



MIP-19



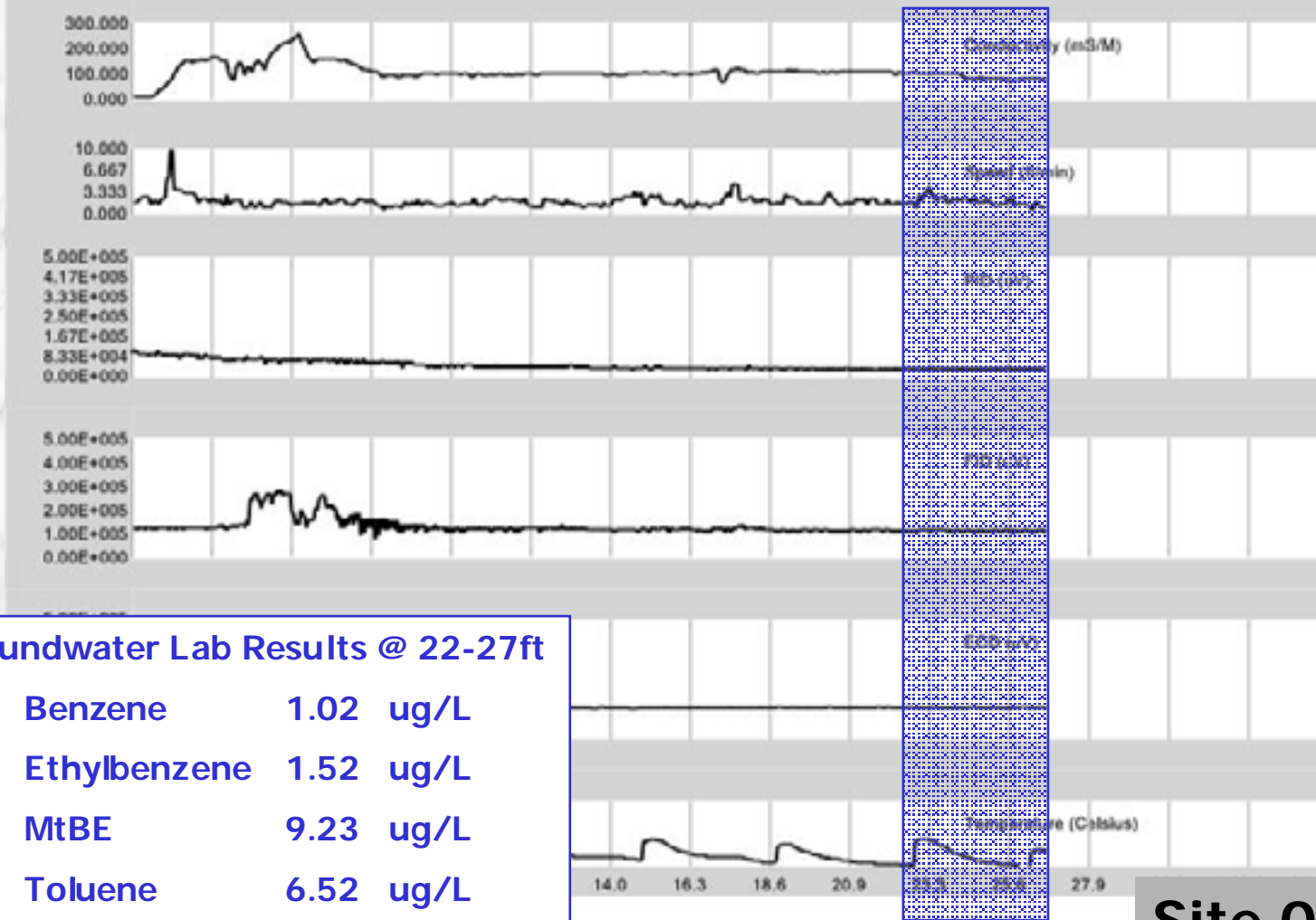
MIP-20



# How do we know MIP worked?

## Collaborative Data Sets

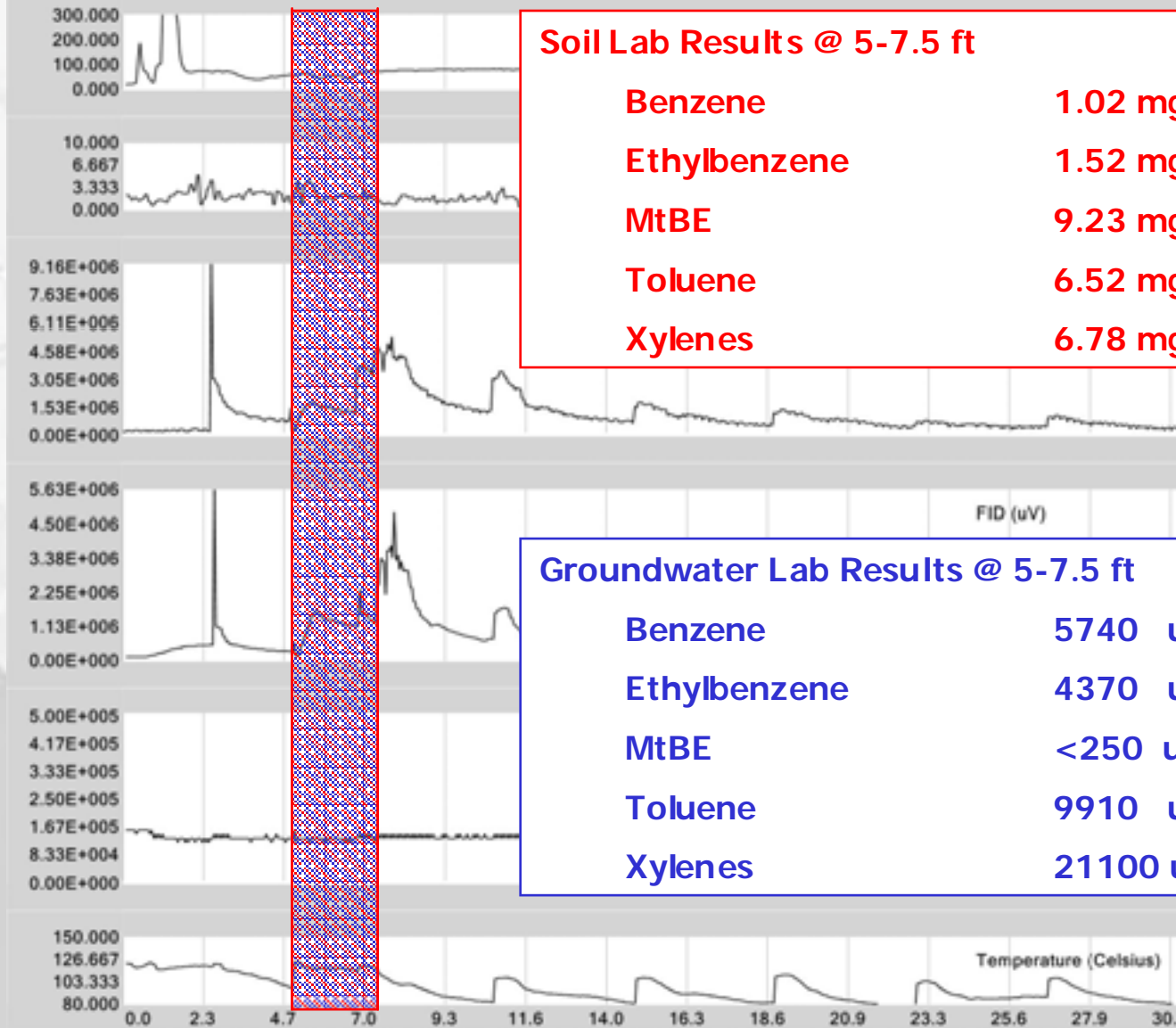
T and T Standard: MIP Log - MIP-04



Groundwater Lab Results @ 22-27ft

Benzene	1.02	ug/L
Ethylbenzene	1.52	ug/L
MtBE	9.23	ug/L
Toluene	6.52	ug/L
Xylenes	6.78	ug/L
TPH – Gas	<100	ug/L

Site 02  
MIP 04



**Soil Lab Results @ 5-7.5 ft**

Benzene	1.02 mg/Kg
Ethylbenzene	1.52 mg/Kg
MtBE	9.23 mg/Kg
Toluene	6.52 mg/Kg
Xylenes	6.78 mg/Kg

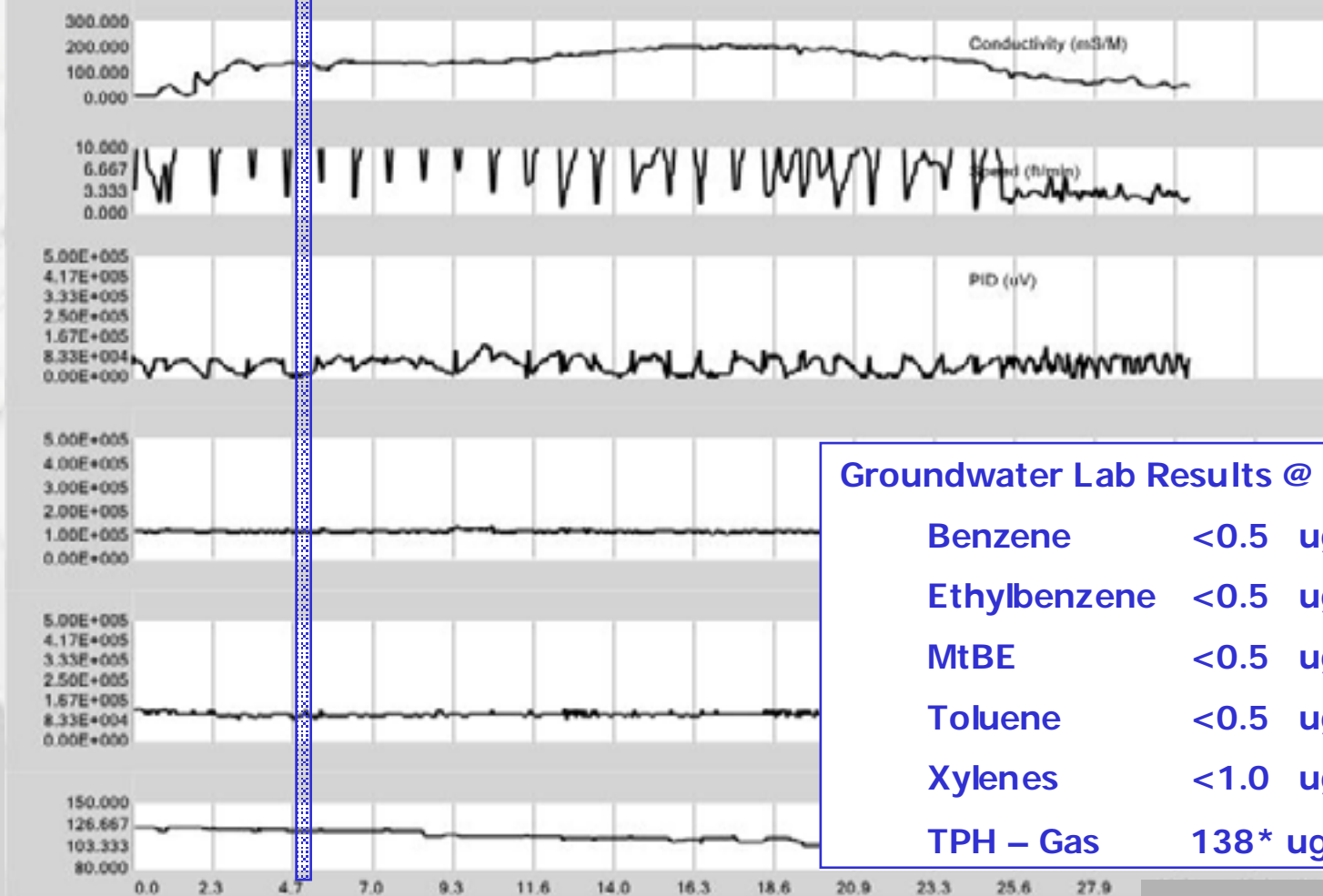
**Groundwater Lab Results @ 5-7.5 ft**

Benzene	5740 ug/L
Ethylbenzene	4370 ug/L
MtBE	<250 ug/L
Toluene	9910 ug/L
Xylenes	21100 ug/L

**Site 02  
MIP 11**



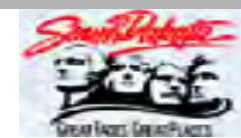
T and T Standard: MIP Log - MIP-17



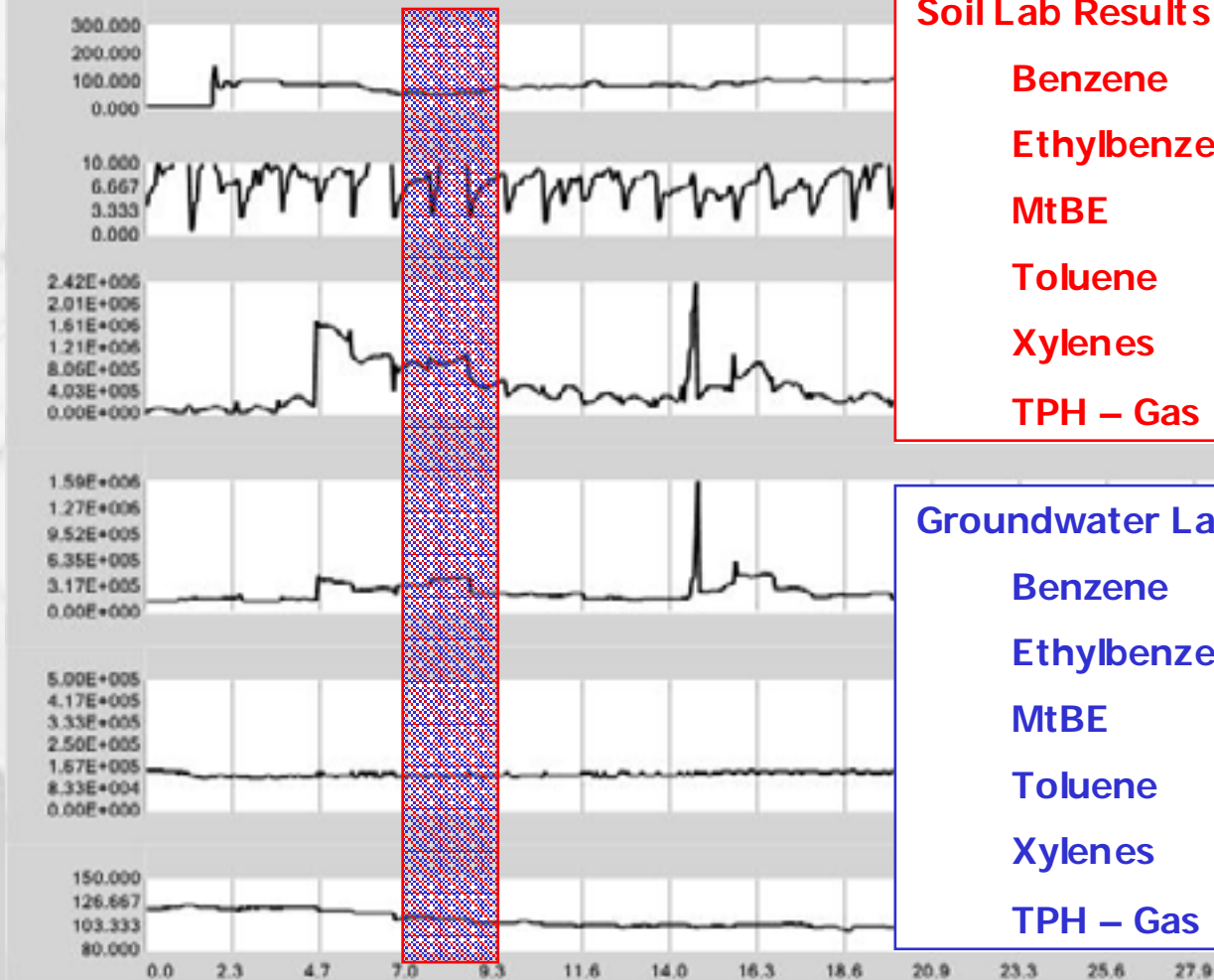
**Groundwater Lab Results @ 5 ft**

Benzene	<0.5	ug/L
Ethylbenzene	<0.5	ug/L
MtBE	<0.5	ug/L
Toluene	<0.5	ug/L
Xylenes	<1.0	ug/L
TPH – Gas	138*	ug/L

**Site 02**  
**MIP 17**



T and T Standard: MIP Log - MIP-19



**Soil Lab Results @ 7-9 ft**

Benzene	<.1 mg/Kg
Ethylbenzene	23.5 mg/Kg
MtBE	<.1 mg/Kg
Toluene	.968 mg/Kg
Xylenes	105 mg/Kg
TPH – Gas	1810 mg/Kg

**Groundwater Lab Results @ 7-9 ft**

Benzene	496 ug/L
Ethylbenzene	1760 ug/L
MtBE	<5 ug/L
Toluene	170 ug/L
Xylenes	7600 ug/L
TPH – Gas	41400 ug/L

**10-20X Variation between soil & gw**

**Site 02  
MIP 19**



# Follow-up Meeting

- All team members reconvened to review each site and discussed future courses of action.
- Any questions regarding the Triad process were addressed.

# What's next?

- A CAP has been established for each of the five sites.
- It is anticipated at least one site will be granted No Further Action by mid-summer.
- The level of uncertainty at each site has been greatly reduced.

# Lessons Learned - Triad

- Takes cooperation *and* commitment by all stakeholders.
- Good communications is essential.
- Real-time measurements provide a much more clear and concise SCM.
- Direct-push and direct sensing methods can be great tools
- Systematic Planning pays off in dividends!

# Conclusions

- **General impressions of the Triad were very positive.**
- **Majority of team members felt that Triad could be implemented into nearly every release case in South Dakota.**
- **Use of Triad was successful in reducing uncertainty and moving sites ahead.**

# Recommendations

- **Best if limited conventional testing done first.**
- **Need commitment from all parties.**
- **Facilitator is beneficial.**
- **Lots of field analytical data is better than a little lab data.**
- **Avoid working weekends!**





# Contact Information

**Dennis Rounds**  
**SD PRCF**  
**445 E. Capitol Ave.**  
**Pierre SD 57501**

**(605) 773-3769**  
**(605) 773-6048 – fax**  
**dennis.rounds@state.sd.us**

**John Sohl**  
**Columbia Technologies, LLC**  
**1448 South Rolling RD.**  
**Baltimore MD 21227**

**(410) 536-9911**  
**[www.columbiadata.com](http://www.columbiadata.com)**