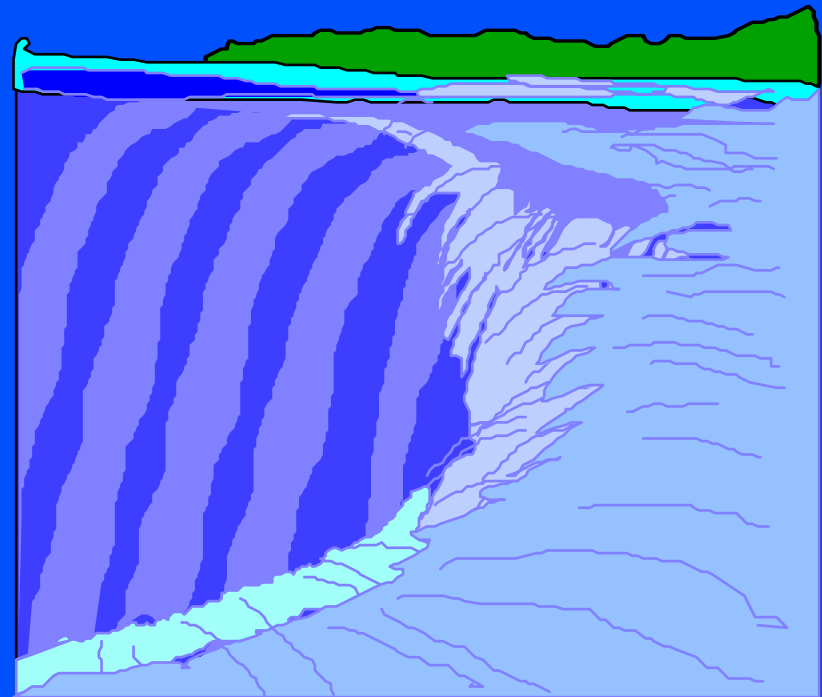
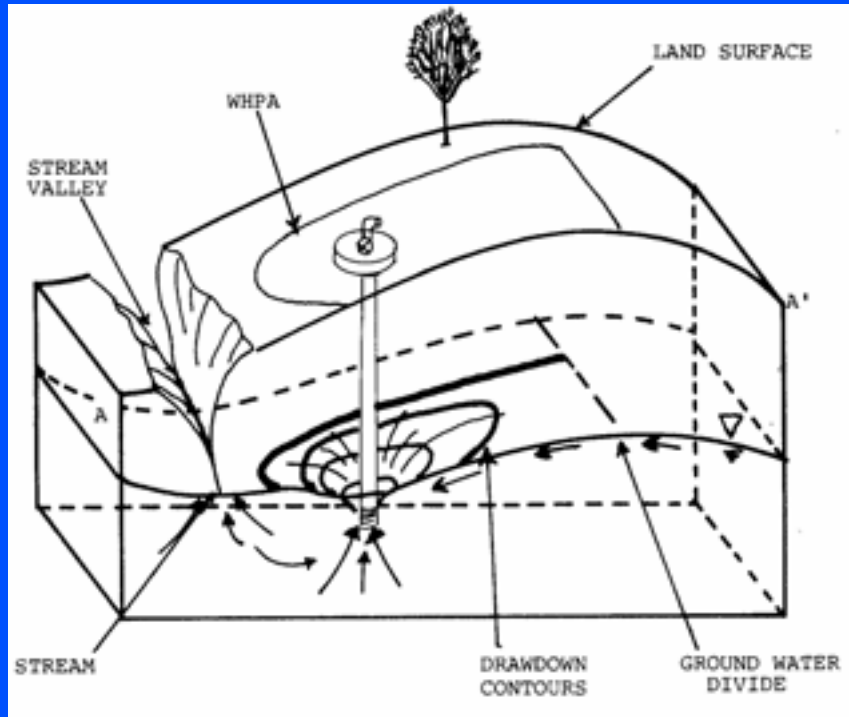


NORTH CAROLINA'S SOURCE WATER ASSESSMENT PROGRAM

Integration with the UST Program



Gale Johnson



North Carolina's SWAP

- Required by 1996 Safe Drinking Water Amendments
- Assess Existing Public Drinking Water Sources
 - Susceptibility to Contamination
 - 9,500 wells and 207 surface water intakes (7,800 PWS Systems)
- Promote Source Water Protection
 - Cost Effective Strategy to Ensure Safe Drinking Water



Basic SWAP Requirements

- Delineate Source Water Assessment Area Boundaries
 - Ground Water and Surface Water
- Inventory Potential Contaminant Sources (PCSs)
- Assess Susceptibility of PWS Sources
 - Required Final Assessment Rating (High, Moderate, Low)



Public Availability of SWAP Results and Reports

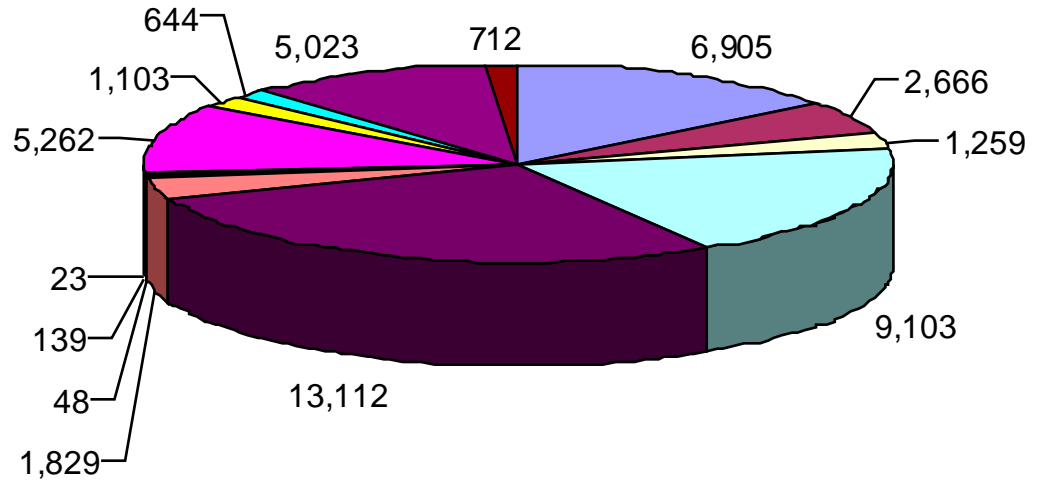
- Reports with Tables, Maps and Figures
- ArcIMS Viewer and Custom Tools
- <http://www.deh.enr.state.nc.us/pws/>



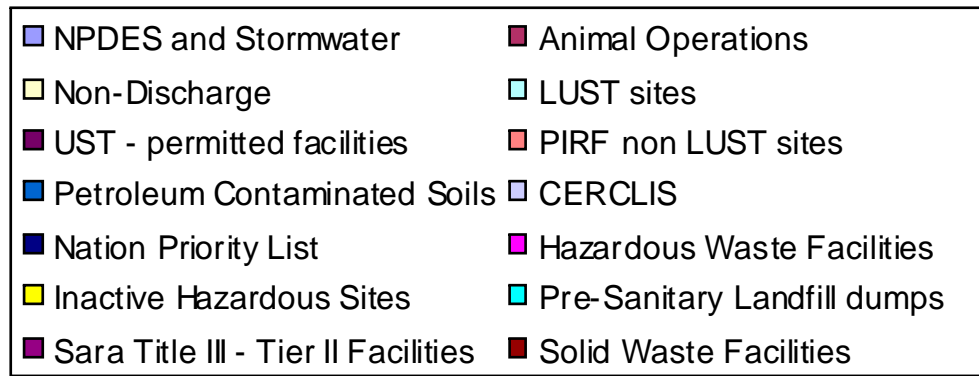
Potential Contaminant Source (PCS) Inventory

Individual Program Information on PCSs Combined into a GIS Database

Potential Contaminant Sources From Existing Program Databases



Total PCSs = 47,828



Benefits of Collaboration

- Targeted UST Facility Inspections
- Site Assessments related to LUSTs
 - Site assessment requires identification of all water supply wells and WHPAs within a 1500-foot radius of a confirmed release or discharge
- Prioritization of Site Cleanups
 - Risk-based cleanup standards
- Development of a Local WHP Programs



Permitted UST Facilities

- Approximately 70% located by the UST Section using GPS
- The SWAP Program provided funding to geo-locate the remaining facilities
- UST database updated and loaded into the SWAP application



North Carolina Department of Environment and Natural Resources

Public Water Supply Section

[PWS Home](#)
[DEH Home](#)
[Contact Us](#)


Source Water Assessment and Protection in North Carolina Protecting the Water You Drink

Source water is the untreated water from streams, rivers, lakes, or groundwater aquifers that are sources of public drinking water. Source water undergoes many treatment processes before it reaches the consumer. Protecting your source water can reduce the extent and expense of water treatment needed for drinking water. NC's source water programs are based on the federal programs of the U.S. Environmental Protection Agency (EPA).

Source Water Assessment Program (SWAP)

Learn about Your Drinking Water Source: Reports addressing the susceptibility of each PWS intake. Learn About SWAP, NC's SWAP Plan, NC SWAPInfo (Computer Application)

Source Water Protection (SWP) Program

Protecting the Water You Drink: Information about source water protection for watersheds and wells. Learn about SWP, SWP Success Stories in NC, Wellhead Protection Program (WHP), Water Supply Watershed Program (WSWP), Funding & Other Resources for SWP.



NC Source Water Programs
1634 Mail Service Center • Raleigh, NC 27699-1534



Source Water Assessment Program Report
for
BETHEL, TOWN OF
Community Water System

Introduction: What is a Source Water Assessment?

The North Carolina Division of Environmental Health, Public Water Supply (PWS) Section is responsible for implementing the Source Water Assessment Program (SWAP) and completing assessments for all public drinking water supplies in the state. The 1996 amendments to the Safe Drinking Water Act provided federal support and required states to conduct assessments of all public water systems. A source water assessment is a qualitative evaluation of the potential of a drinking water source to become contaminated by the identified potential contaminant sources (PCS) within the delineated area. In North Carolina there are more than 10,000 public water supply sources that were assessed by the state. The PWS Section has gathered information for each water supply and developed a process for completing the assessments. This process is summarized in the next few pages and detailed in Section 6 of this report.

This report provides a summary of the results for the **Source Water Assessment** for your drinking water source(s).

Table 1. Public Water Supply System Information

System Name	BETHEL, TOWN OF
City	BETHEL
PWS ID	04-74-030
Source Name	WHITEHURST ST WELL
Source Name	HWY 11 WELL
Source Name	MORTON ST WELL #4

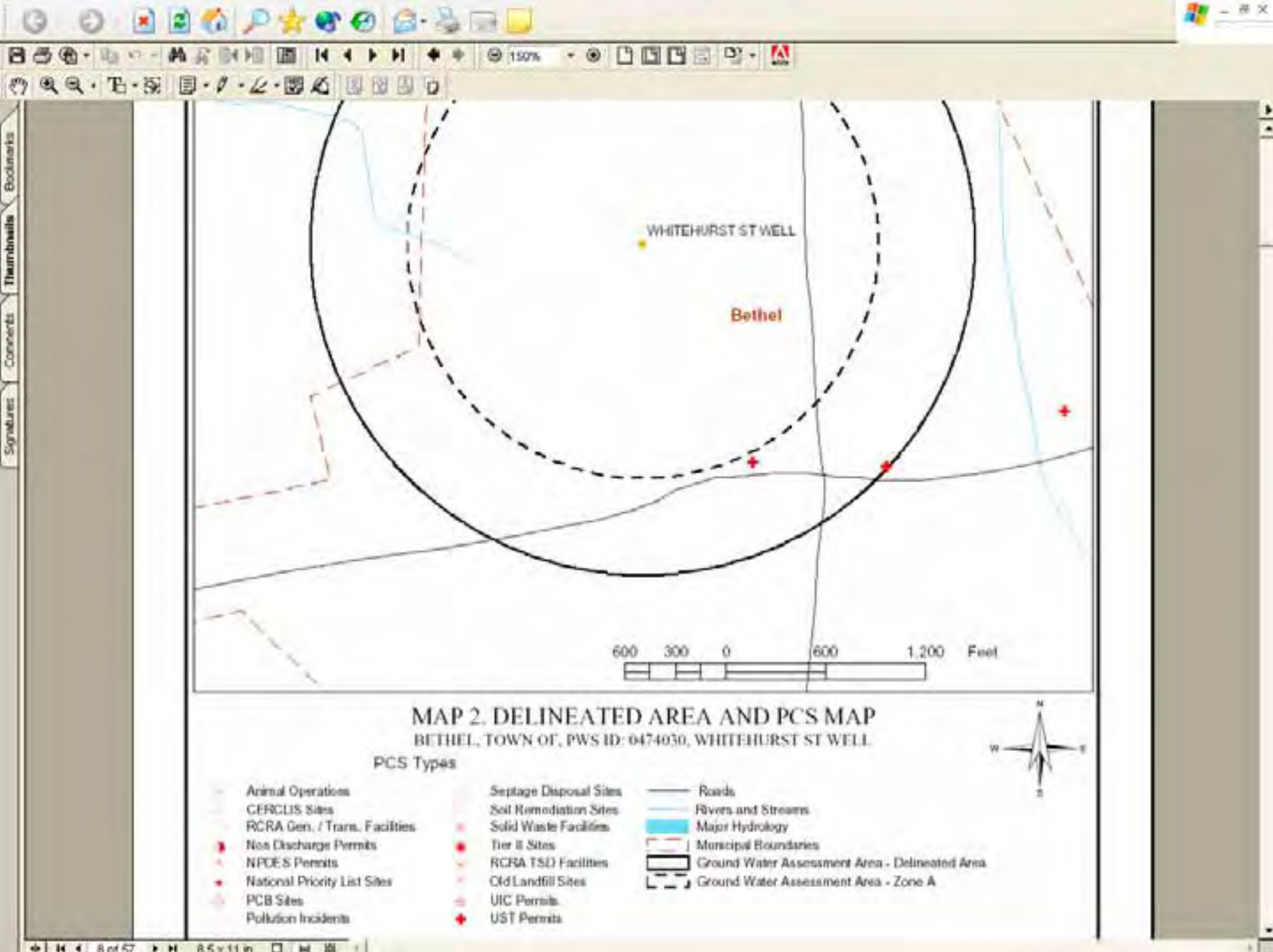
Assessment Report Contents

This assessment report includes the following sections:

- Section 1: Assessment Area Delineation
- Section 2: Potential Contaminant Source Inventory and Map
- Section 3: What is a Susceptibility Rating?
- Section 4: Reviewing Your SWAP Results
- Section 5: List of Maps, Tables and Figures for Your Well(s)
- Section 6: North Carolina's SWAP Approach

Section 1: Assessment Area Delineation

The area delineated for your well(s) for the purpose of this assessment is the contributing area for the well(s). When a well is pumped, it begins to influence groundwater that is flowing through the subsurface and towards the well. The pumping of the well creates a contributing area around



**Table 4. Potential Contaminant Source Attributes
BETHEL, TOWN OF
PWS ID: 04-74-030, WHITEHURST ST WELL.**

Common Attributes

PCS Name	PCS ID	PCS Type	PCS Risk Rating	Street Address	City	Zip	County
E.L. BLOUNT PROPERTY	10778	Pollution Incidents	H	P.O. BOX 400	BETHEL	Unknwn	Pitt
LILLIAN WARREN TETTERTON	23808	Pollution Incidents	H	208 NELSON ST.	BETHEL	Unknwn	Pitt
L.L. ANDREWS RESIDENCE	23921	Pollution Incidents	H	213 WHITEHURST STREET	BETHEL	Unknwn	Pitt
WHITAKERS 66	0-030051	UST Sites	H	WASH. & JAMES ST./PO BOX 674	BETHEL	Unknwn	PITT

NC SWAPInfo



To view the changes made in the visible column, press the refresh button above.

North

Public Water Supply Sources

Visible Active

- Adjacent
- Campground
- Community
- Non-Transient Non-Community
- Transient Non-Community

Show Group Hide Group

Wellhead Protection Areas

Visible Active

- Wellhead Protection Areas

Show Group Hide Group

Ground Water Assessment Areas

Visible Active

- Ground Water Delineated Area
- Ground Water Zone A

Show Group Hide Group

Surface Water Assessment Areas - Zones

Visible Active

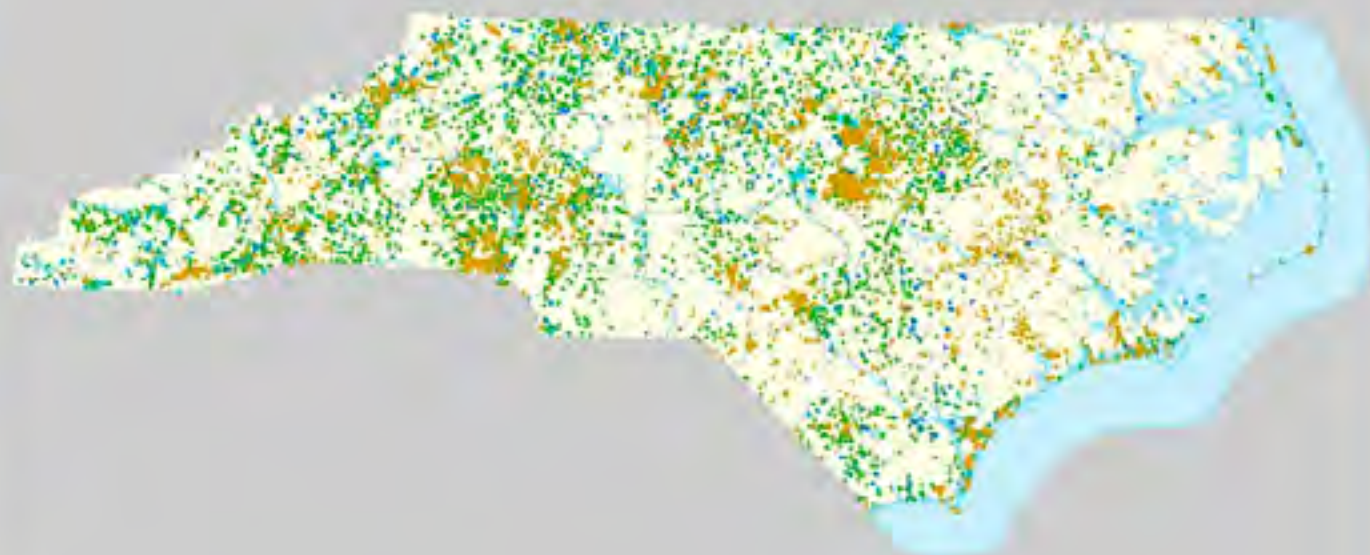
- Watershed boundary
- Protected Area boundary (WS-IV and V only)
- Critical Area (NA for WS-1)
- Stream Zone

Show Group Hide Group

Potential Contaminant Sources

Visible Active

- Animal Operations
- CERCLIS Sites



South

0 1000000m

NC SWAPInfo

To view the changes made in the visible column, press the refresh button above.

Public Water Supply Sources

Visible Active

- Adjacent
- Campground
- Community
- Non-Transient Non-Community
- Transient Non-Community

Wellhead Protection Areas

Visible Active

- Wellhead Protection Areas

Ground Water Assessment Areas

Visible Active

- Ground Water Delineated Area
- Ground Water Zone A

Surface Water Assessment Areas - Zones

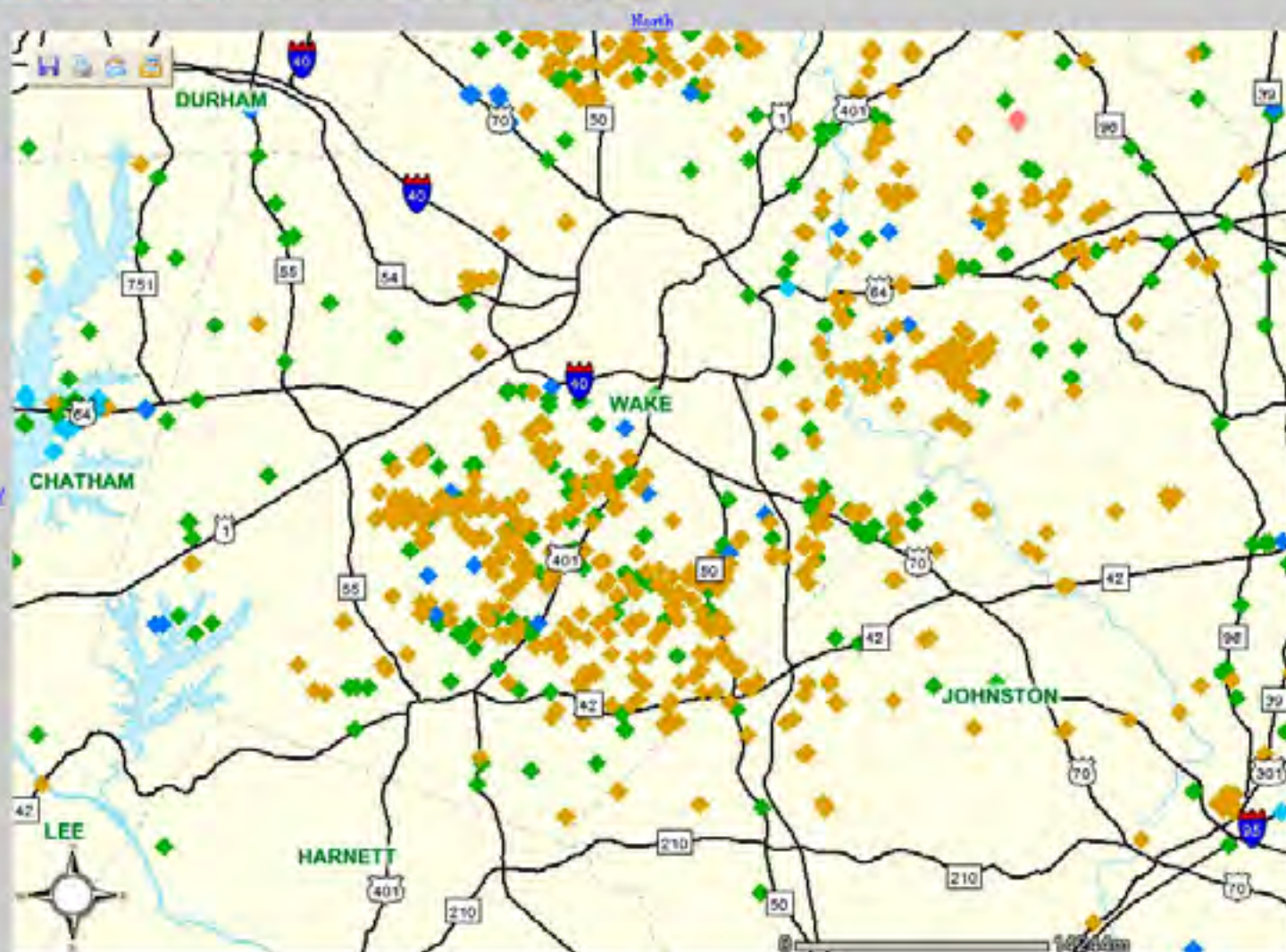
Visible Active

- Watershed Boundary
- Protected Area Boundary (WS-IV and V only)
- Critical Area (NA for WS-1)
- Stream Zone

Potential Contaminant Sources

Visible Active

- Animal Operations
- CERCLIS Sites



NC SWAPinfo



To view the changes made in the visible column, press the refresh button above.

Public Water Supply Sources

Visible Active

- Adjacent
- Camperground
- Community
- Non-Transient Non-Community
- Transient Non-Community

Wellhead Protection Areas

Visible Active

- Wellhead Protection Areas

Ground Water Assessment Areas

Visible Active

- Ground Water Delineated Area
- Ground Water Zone A

Surface Water Assessment Areas
Zones

Visible Active

- Watershed Boundary
- Protected Area Boundaries (WS-IV and V only)
- Critical Area (NA for WS-1)
- Stream Zone

Potential Contaminant Sources

Visible Active

- Animal Operations
- CERCLIS Sites



NC SWAPinfo

To view the changes made in the visible column, press the refresh button above.

Public Water Supply Sources

Visible Active

- Adjacent
- Camperground
- Community
- Non-Transient Non-Community
- Transient Non-Community

Wellhead Protection Areas

Visible Active

- Wellhead Protection Areas

Ground Water Assessment Areas

Visible Active

- Ground Water Delineated Area
- Ground Water Zone A

Surface Water Assessment Areas
Zones

Visible Active

- Watershed Boundary
- Protected Area Boundary (WS-IV and V only)
- Critical Area (NA for WS-1)
- Stream Zone

Potential Contaminant Sources

Visible Active

- Animal Operations
- CERCLIS Sites



NC SWAPinfo



Ground Water Assessment Areas

Visible Active

- Ground Water Delineated Area
- Ground Water Zone A

Show Group

Hide Group

Surface Water Assessment Areas - Zones

Visible Active

- Watershed Boundary
- Protected Area Boundary (WS-IV and V only)
- Critical Area (NA for WS-1)
- Stream Zone

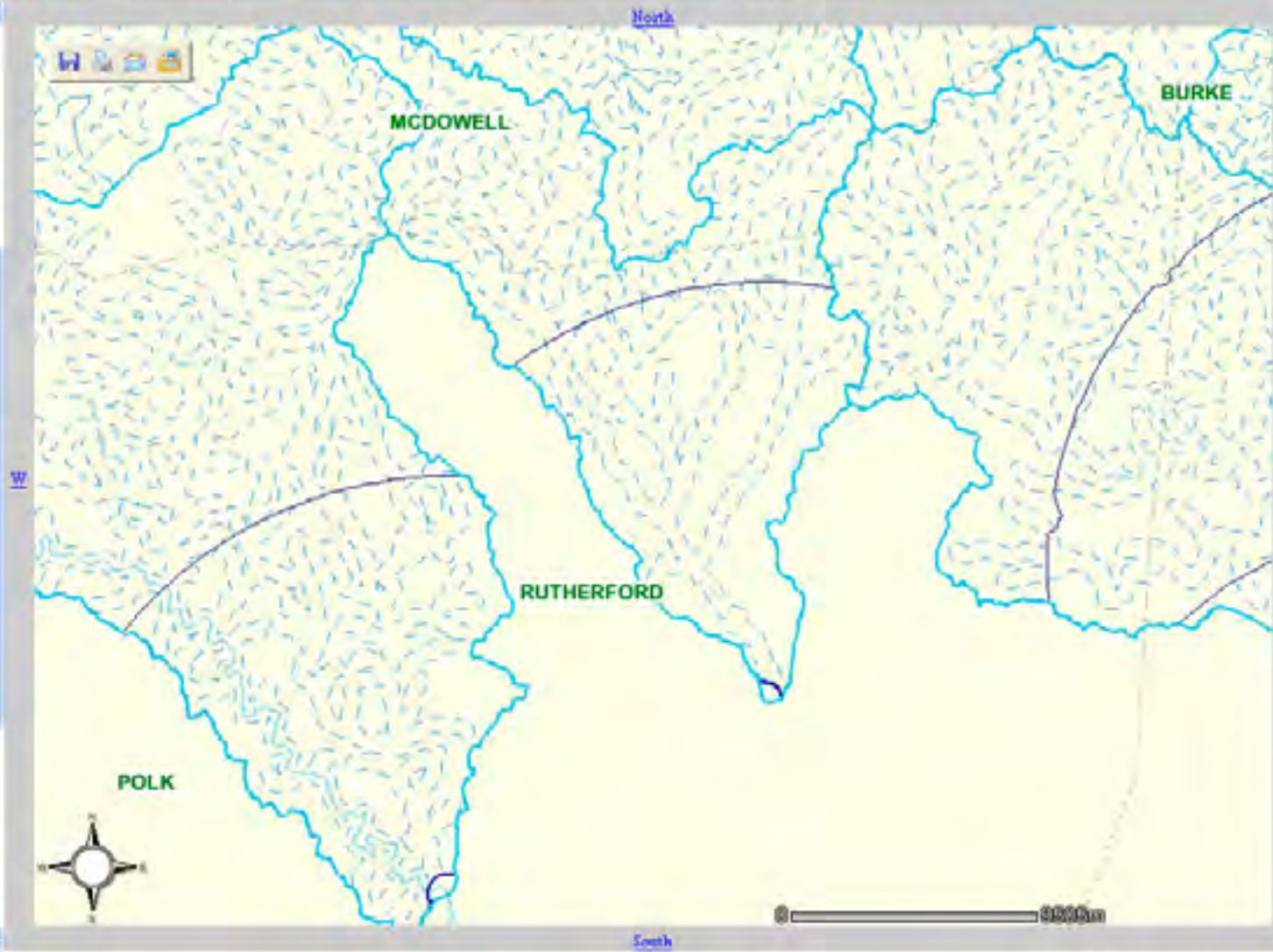
Show Group

Hide Group

Potential Contaminant Sources

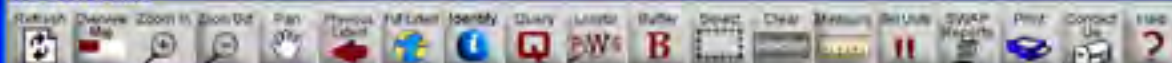
Visible Active

- Animal Operations
- CERCLIS Sites
- National Priority List Sites
- Non Discharge Permits
- NPDES Permits
- PCB Sites
- Pollution Incidents
- RCRA Gen./Trans. Facilities
- RCRA TSD Sites
- Septage Disposal Sites
- Soil Remediation Sites
- Solid Waste Facilities
- Tier II Sites





NC SWAPinfo



Potential Contaminant Sources

Visible Active

- Animal Operations
- CERCLA Sites
- National Priority List Sites
- Non-Discharge Permits
- NRDEL Permits
- Old Landfill Sites
- PCB Sites
- Pollution Incidents
- RCRA Gen./Trans. Facilities
- RCRA TSD Sites
- Sulfate Disposal Sites
- Soil Remediation Sites
- Solid Waste Facilities
- Tier II Sites
- UIC Permits
- UST Permits

Landmarks

Visible Active

- Major Roads
- Municipal Boundaries
- Hydrology
- Counties

0 1000000m

NC SWAPinfo

Refresh Overview Map Zoom In Zoom Out Pan Previous Extent Full Extent Identify Query Leader PW Buffer Select Clear Measure Set Units SWAP Reports Print Contact Us Help

Potential Contaminant Sources

Visible Active

- Animal Operations
- CERCLIS Sites
- National Priority List Sites
- Non-Discharge Permits
- NPDES Permits
- PCB Sites
- Pollution Incidents
- RCRA Gen./Trans. Facilities
- RCRA TSD Sites
- Surface Disposal Sites
- Soil Remediation Sites
- Solid Waste Facilities
- Tier II Sites
- UIC Permits
- Unpermitted Dump Sites
- UST Permits

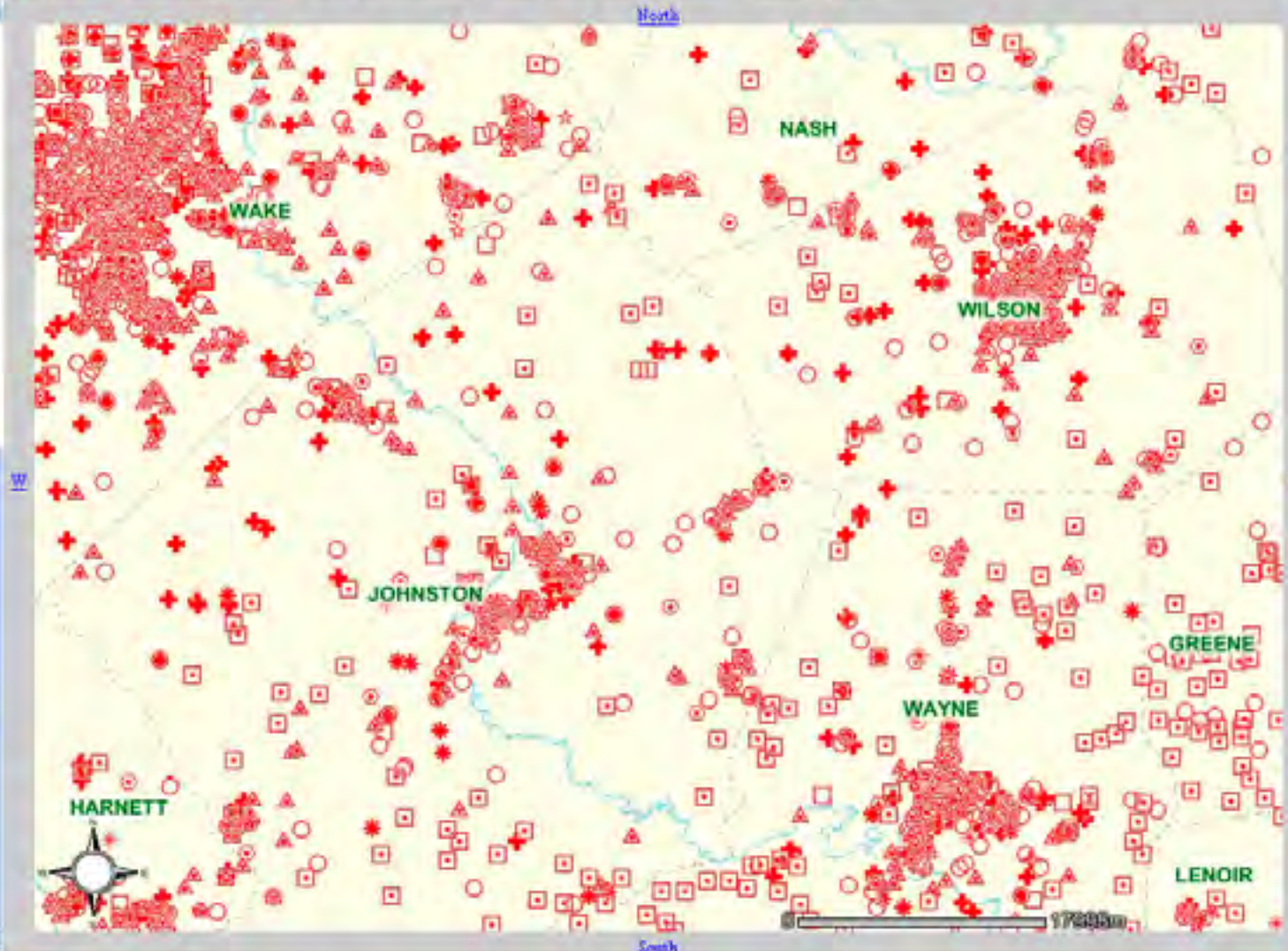
Show Group Hide Group

Landmarks

Visible Active

- Major Roads
- Municipal Boundaries
- Hydrology
- Counties

Show Group Hide Group



NC SWAPinfo

Surface Water Assessment Areas - Zones

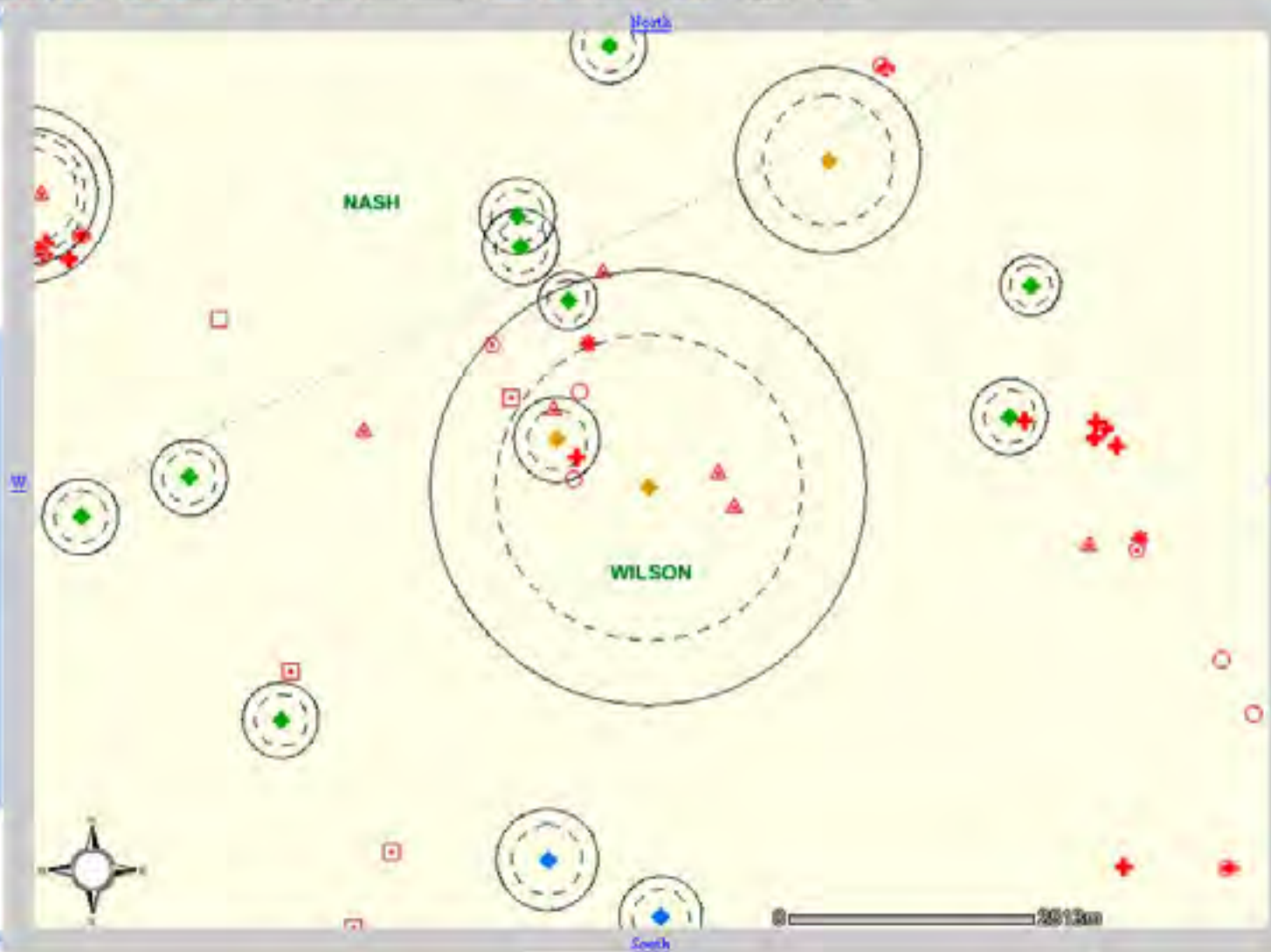
Visible Active

- Watershed Boundary
- Protected Area Boundary (W3-IV and V only)
- Critical Area (NA for W3-1)
- Stream Zone

Potential Contaminant Sources

Visible Active

- Animal Operations
- CERCLIS Sites
- National Priority List Sites
- Non-Discharge Permits
- NPDES Permits
- PCB Sites
- Pollution Incidents
- RCRA Gen./Trans. Facilities
- RCRA TSD Sites
- Sensitive Disposal Sites
- Soil Remediation Sites
- Solid Waste Facilities
- Tier II Sites
- UIC Permits
- Unpermitted Dump Sites
- UST Permits



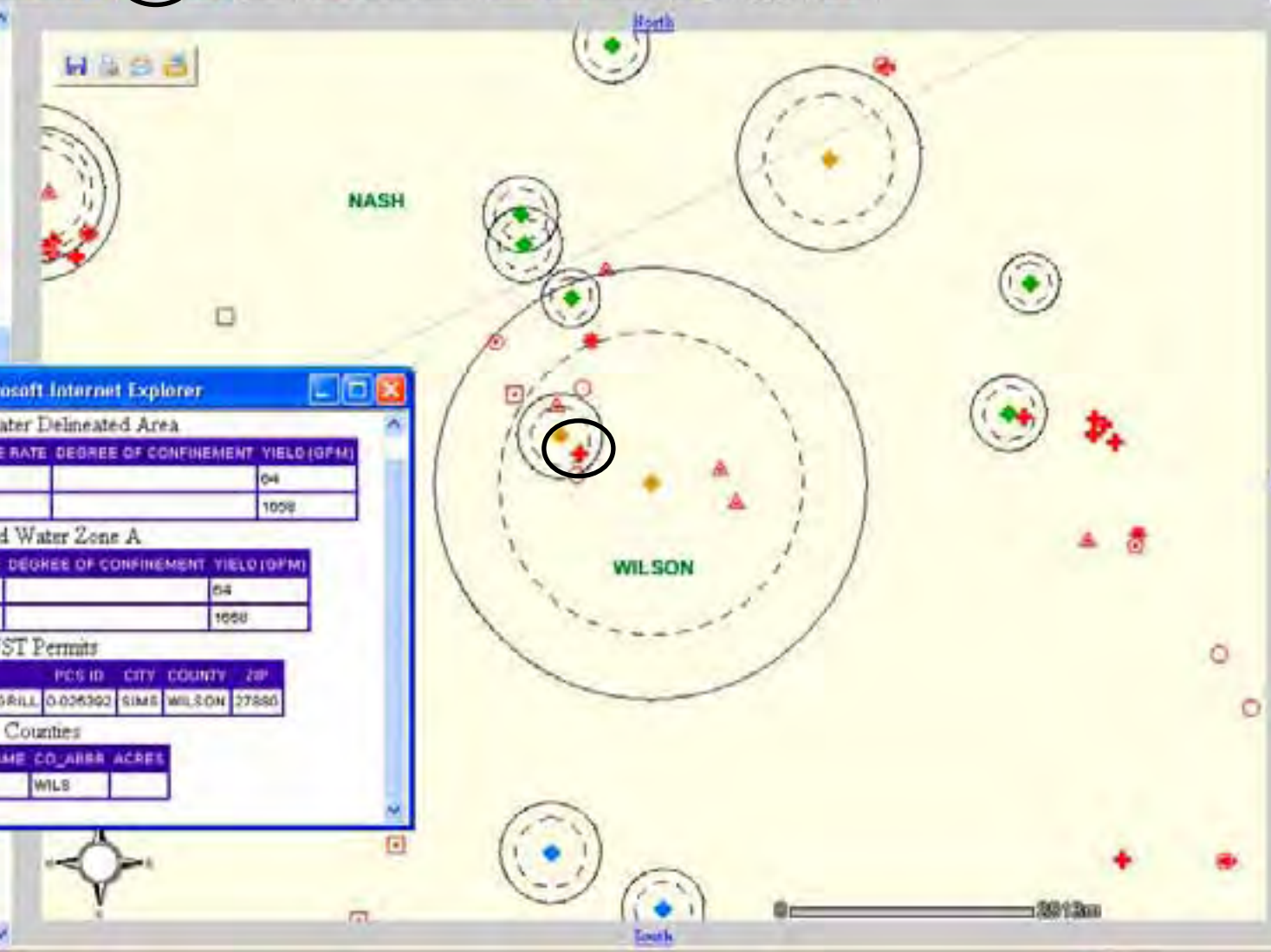
Surface Water Assessment Areas - Zones
Visible Active

- Watershed Boundary
- Protected Area Boundary (WV-LV and V only)
- Critical Area (NA for WS-L)
- Stream Zone

Show Group Hide Group

Potential Contaminant Sources
Visible Active

- Animal Operations
- CERCLIS Sites



Query/Selection Results - Microsoft Internet Explorer

Ground Water Delineated Area

DWDAD	UZR RATING	RECHARGE RATE	DEGREE OF CONFINEMENT	YIELD (GPM)
04880457_b	01.9145427	400000		64
04880453_b	07.0314100	400000		1058

Ground Water Zone A

DWDAD	RECHARGE RATE	DEGREE OF CONFINEMENT	YIELD (GPM)
04880457_a	400000		64
04880453_a	400000		1058

UST Permits

PCS NAME	PCS ID	CITY	COUNTY	ZIP
HAMPS CONVENIENCE & GRILL	0026300	SIMS	WILSON	27880

Counties

COUNTY NAME	CO_ABBR	ACRES
WILSON	WILS	

- Unpermitted Dump Sites
- UST Permits

Show Group Hide Group

NC SWAPinfo

Refresh Download Zoom In Zoom Out Print Previous Full Screen

Show Group Hide Group

Potential Contaminant Sources

Visible Active

- Animal Operations
- CERCLA Sites
- National Priority List Sites
- Non-Discharge Permits
- RCRA Permits
- Old Landfill Sites
- PCB Sites
- Pollution Incidents
- RCRA Gen./Trans. Facilities
- RCRA TSD Sites
- Sewage Disposal Sites
- Soil Remediation Sites
- Solid Waste Facilities
- Tier II Sites
- UIC Permits
- UST Permits

Show Group Hide Group

Landmarks

Visible Active

- Major Roads
- Municipal Boundaries
- Hydrology
- Counties

UST Permits - Microsoft Internet Explorer

File Edit View Favorites Tools Help

Back Forward Stop Home Search Favorites Media

Address

Name: UST Permits

Description:
 An underground storage tank system (UST) is a tank and any underground piping connected to the tank that has at least 10 percent of its combined volume underground. The federal UST regulations apply only to underground tanks and piping storing either petroleum or certain hazardous substances. These facilities are regulated under Subtitle I of RCRA and must be registered with the state and receive an operating permit annually. Until the mid-1980s, most USTs were made of bare steel, which is likely to corrode over time and allow UST contents to leak into the environment. Faulty installation or inadequate operating and maintenance procedures also can cause USTs to release their contents into the environment. The greatest potential hazard from a leaking UST is that the petroleum or other hazardous substance can seep into the soil and contaminate groundwater. A leaking UST can also present other health and environmental risks, including the potential for fire and explosion.

Source of Data:
 Data was obtained from the North Carolina Division of Waste Management, Underground Storage Tank Section in May of 2002. As of June 2003 no changes have been made to this data. For additional information about this data, contact the Division of Waste Management staff by phone at 919-733-4996 or [click here](#) to visit their web site.

Data Processing Description:
 This data was processed in the following manner:

- Each record that contained a latitude and longitude was processed for use in the assessments. (There were some records in the database that did not have any location information and they were not used.)
- A shape file was made using the latitude and longitude in decimal degrees.
- Each record was checked to determine if the plotted location of the record matched with the county field in the record. Any record that did not have a matching county location was not included in the assessments.

Spatial Domain:

Internet

South



Potential Contaminant Sources

- Animal Operations
- CERCLA Sites
- National Priority List Sites
- Non-Discharge Permits
- NPDES Permits
- Old Landfill Sites
- PCB Sites
- Pollution Incidents
- RCRA Gen./Trans. Facilities
- RCRA TSD Sites
- Sestane Disposal Sites
- Soil Remediation Sites
- Solid Waste Facilities
- Tier II Sites
- UIC Permits
- UST Permits

Landmarks

- Major Roads
- Municipal Boundaries
- Hydrology
- Counties



Programs

Hazardous Waste
 Permits / Corrective Action
 Enforcement
 Inspections
 Technical Assistance

Superfund
 Brownfields
 Dry-cleaning
 Inactive Hazardous Sites
 Registered Environmental Consultant
 Site assessment and evaluation (NPL)

Solid Waste
 Field Operations
 Enforcement
 Planning
 Medical
 Methane
 Tires
 White Goods

Underground Storage Tank
 Trust Funds
 Permits and Inspections
 Corrective Actions

Forms
 Superfund
 UST

NCDENR - Division of Waste Management - 1646 Mail Service Center Raleigh, NC 27693-1646 -



NC SWAPinfo

Potential Contaminant Sources

Visible Active

- Animal Operations
- CERCLIS Sites
- National Priority List Sites
- RCRA Discharge Permits
- NPDES Permits
- Old Landfill Sites
- PCB Sites
- Pollution Incidents
- RCRA Gen./Trans. Facilities
- RCRA TSD Sites
- Sewage Disposal Sites
- Soil Remediation Sites
- Solid Waste Facilities
- Tier II Sites
- UIC Permits
- UST Permits

Landmarks

Visible Active

- Major Roads
- Municipal Boundaries
- Hydrology
- Counties

http://204.211.09.20/Swap_app/toolbar.htm - Microsoft Internet Explorer

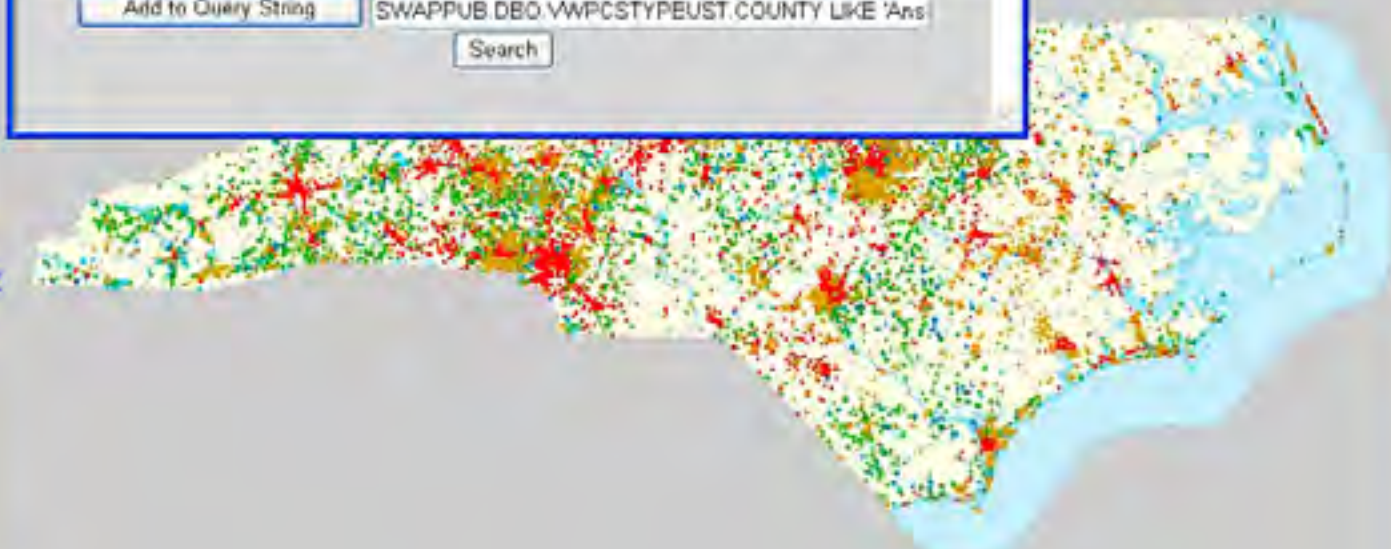
Use this tool to find Potential Contaminant Sources or Public Water Supply Sources in a specified county.

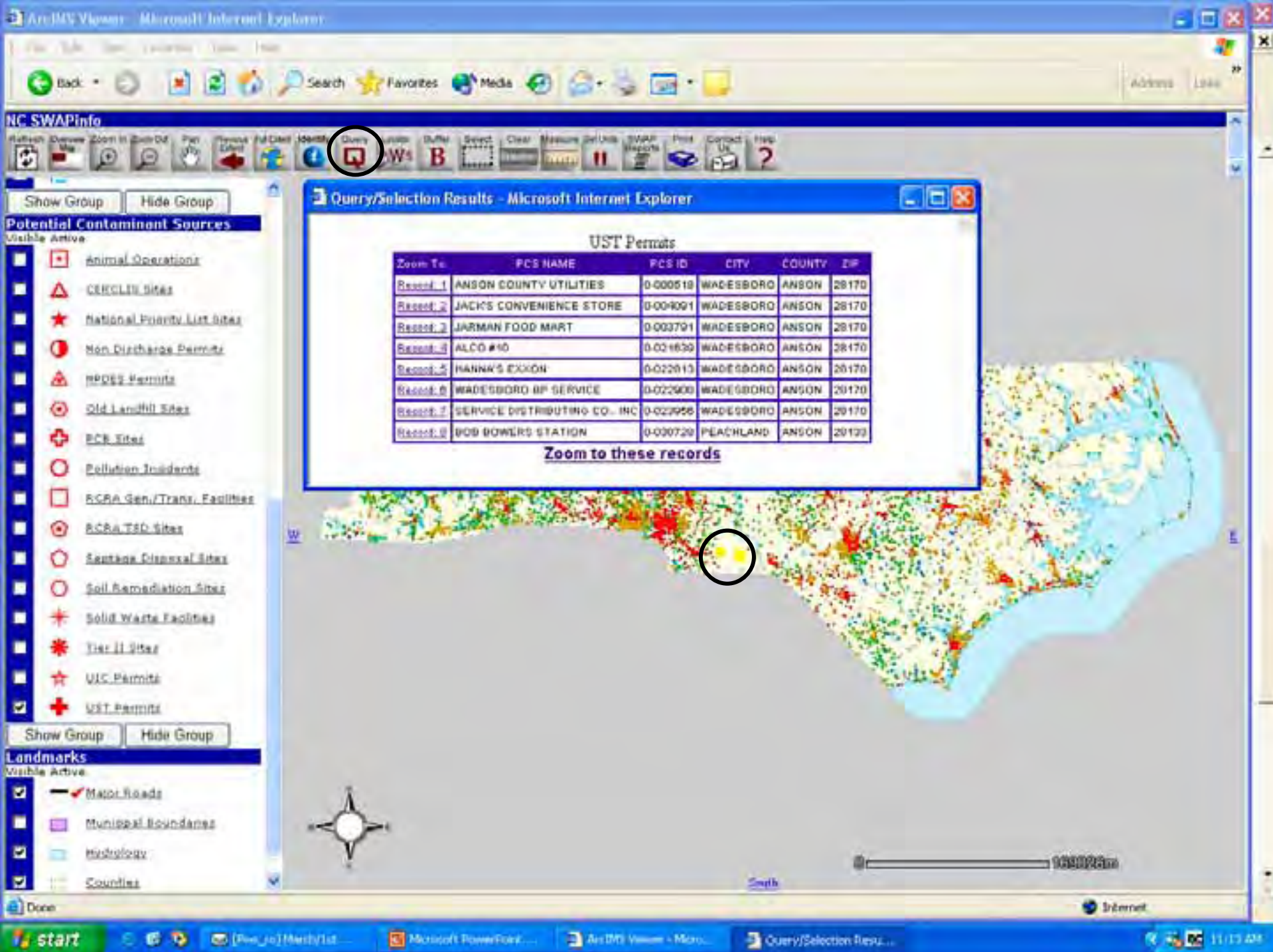
Find a PCS type in a specified county

UST Permits In County: Anson

Make sure layer to be queried is checked "visible".

SWAPPUB DBO.VWPCSTYPEUST.COUNTY LIKE 'Ans'





NC SWAPinfo

- Refresh
- Download
- Zoom In
- Zoom Out
- Print
- Previous View
- Full Screen
- Identify
- Query**
- Layers
- Buffer
- Select
- Clear
- Measure
- Set Units
- SWAP Reports
- Print
- Contact Us
- Help

Show Group Hide Group

Potential Contaminant Sources

- Visible Active
- Animal Operations
- CERCLA sites
- National Priority List sites
- Non-Discharge Permits
- NPDES Permits
- Old Landfill Sites
- PCB Sites
- Pollution Incidents
- RCRA Gen./Trans. Facilities
- RCRA TSD sites
- Sentinel Disposal Sites
- Soil Remediation Sites
- Solid Waste Facilities
- Tier II sites
- UIC Permits
- UST Permits

Show Group Hide Group

Landmarks

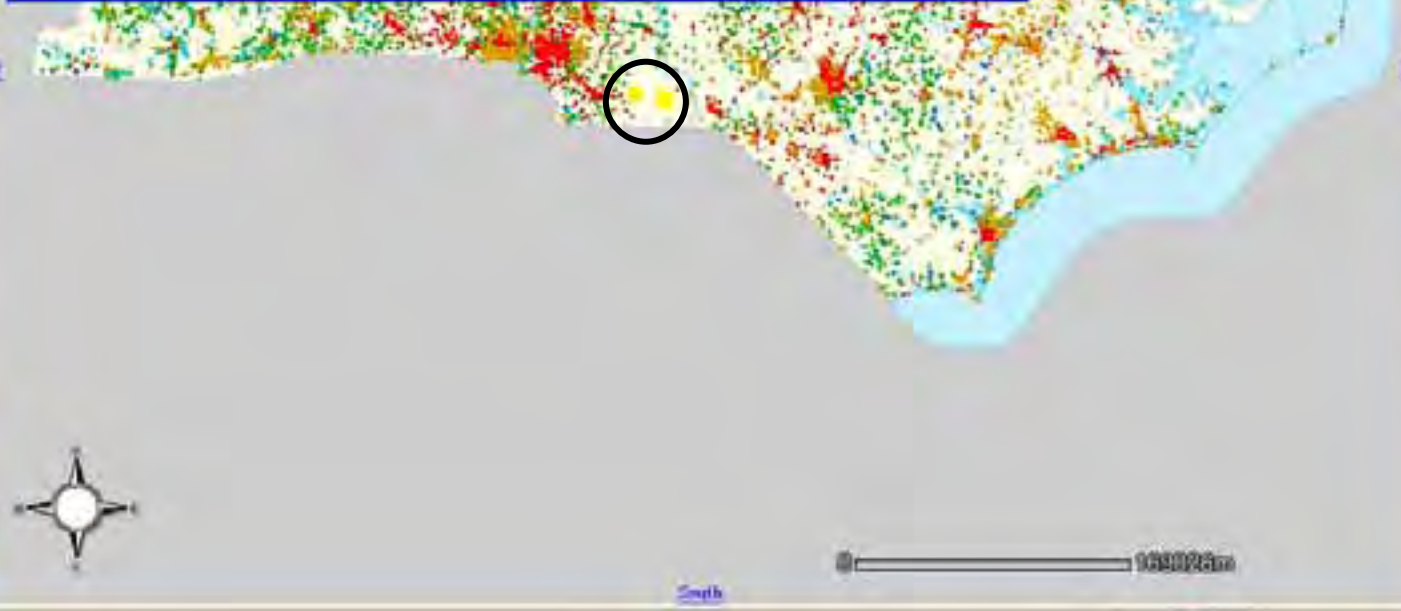
- Visible Active
- Major Roads
- Municipal Boundaries
- Highways
- Counties

Query/Selection Results - Microsoft Internet Explorer

UST Permits

Zoom To	PCS NAME	PCS ID	CITY	COUNTY	ZIP
Record 1	ANSON COUNTY UTILITIES	0-000518	WADESBORO	ANSON	28170
Record 2	JACK'S CONVENIENCE STORE	0-004091	WADESBORO	ANSON	28170
Record 3	JARMAN FOOD MART	0-003791	WADESBORO	ANSON	28170
Record 4	ALCO #10	0-024630	WADESBORO	ANSON	28170
Record 5	HANNA'S EXXON	0-022015	WADESBORO	ANSON	28170
Record 6	WADESBORO BP SERVICE	0-022600	WADESBORO	ANSON	28170
Record 7	SERVICE DISTRIBUTING CO., INC	0-022956	WADESBORO	ANSON	28170
Record 8	BOB BOWERS STATION	0-030720	PEACHLAND	ANSON	28133

Zoom to these records





NC SWAPinfo



Potential Contaminant Sources

Visible Active

- Animal Operations
- CERCLA Sites
- National Priority List Sites
- RCRA Discharge Permits
- NPDES Permits
- Old Landfill Sites
- PCB Sites
- Polystyrene Incidents
- RCRA Gen./Trans. Facilities
- RCRA TSD Sites
- Septage Disposal Sites
- Soil Remediation Sites
- Solid Waste Facilities
- Tier II Sites
- UIC Permits
- UST Permits

Landmarks

Visible Active

- Major Roads
- Municipal Boundaries
- Hydrology
- Counties

Query/Selection Results - Microsoft Internet Explorer

UST Permits

Zoom To	PCS NAME	PCS ID	CITY	COUNTY	ZIP
Record_1	ANSON COUNTY UTILITIES	0-000518	WADESBORO	ANSON	28170
Record_2	JACKS CONVENIENCE STORE	0-004091	WADESBORO	ANSON	28170
Record_3	JARMAN FOOD MART	0-003791	WADESBORO	ANSON	28170
Record_4	ALCO #10	0-021830	WADESBORO	ANSON	28170
Record_5	HANNA'S EXXON	0-022013	WADESBORO	ANSON	28170
Record_6	WADESBORO BP SERVICE	0-022900	WADESBORO	ANSON	28170
Record_7	SERVICE DISTRIBUTING CO. INC	0-023956	WADESBORO	ANSON	28170
Record_8	BOB BOWERS STATION	0-000720	PEACHLAND	ANSON	28122

[Zoom to these records](#)

UNION

ANSON



0 5000 Feet

Scale

NC SWAPinfo



Potential Contaminant Sources

Visible Active

- Animal Operations
- CERCLIS Sites
- National Priority List Sites
- Non-Discharge Permits
- NRDES Permits
- Old Landfill Sites
- PCB Sites
- Pollution Incidents
- RCRA Gen./Trans. Facilities
- RCRA TSD Sites
- Surface Disposal Sites
- Soil Remediation Sites
- Solid Waste Facilities
- Tier II Sites
- UIC Permits
- UST Permits

Show Group

Hide Group

Landmarks

Visible Active

- Major Roads
- Municipal Boundaries
- Hydrology
- Counties

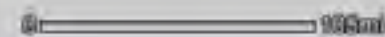
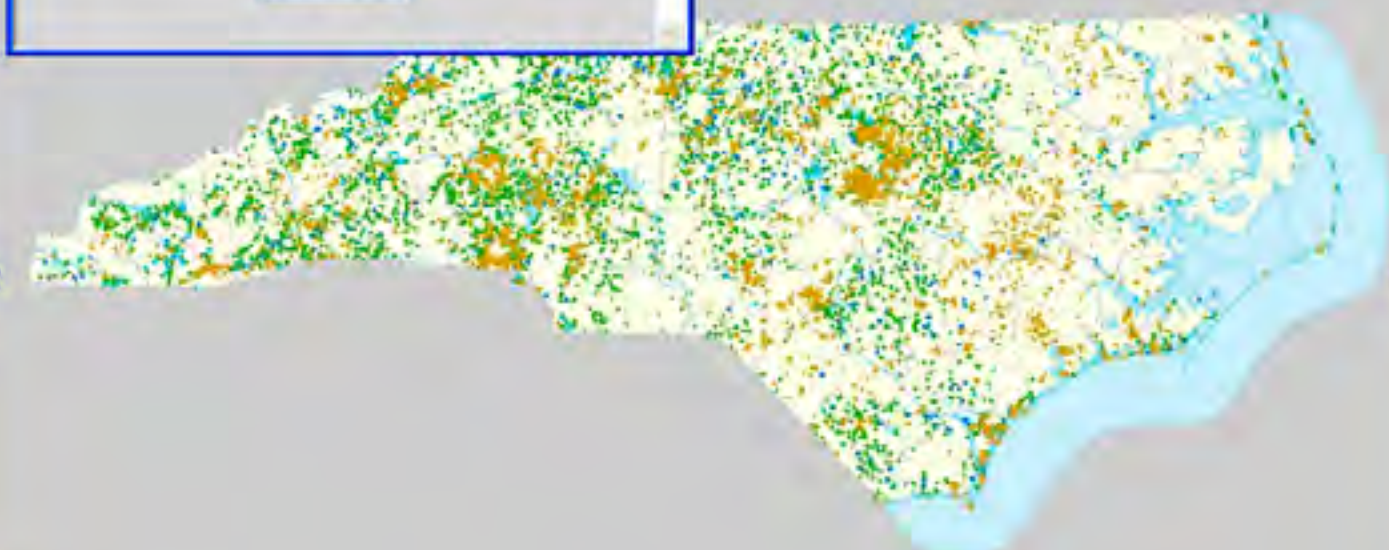
Show Group

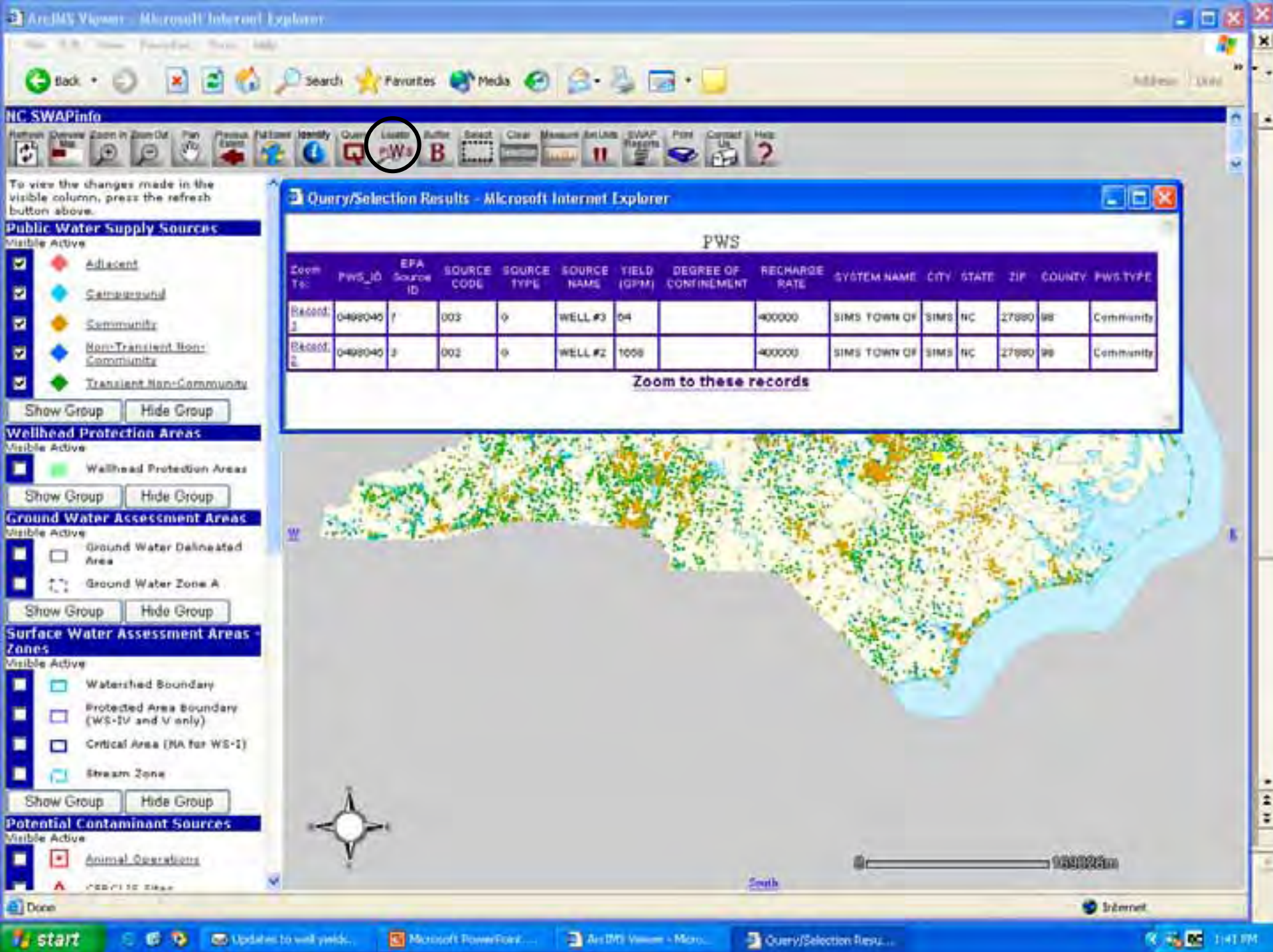
Hide Group

http://204.211.89.20/Swap_app/toolbar.htm - ...

Use this tool to locate a PWS by name or ID.
Enter the PWS ID or PWS name:

Select PWS search type: ID NAME





NC SWAPinfo

Navigation toolbar with icons for Home, Previous View, Zoom In, Zoom Out, Pan, Refresh, Full Screen, Identify, Query, **Load PWS**, Buffer, Select, Clear, Measure, Set Units, SWAP Reports, Print, Copy to Clipboard, Help.

To view the changes made in the visible column, press the refresh button above.

Public Water Supply Sources

- Visible Active
- Adjacent
 - Seasonal
 - Community
 - Non-Transient Non-Community
 - Transient Non-Community
- Show Group Hide Group

Wellhead Protection Areas

- Visible Active
- Wellhead Protection Areas
- Show Group Hide Group

Ground Water Assessment Areas

- Visible Active
- Ground Water Delineated Area
 - Ground Water Zone A
- Show Group Hide Group

Surface Water Assessment Areas - Zones

- Visible Active
- Watershed Boundary
 - Protected Area Boundary (WS-IV and V only)
 - Critical Area (NA for WS-1)
 - Stream Zone
- Show Group Hide Group

Potential Contaminant Sources

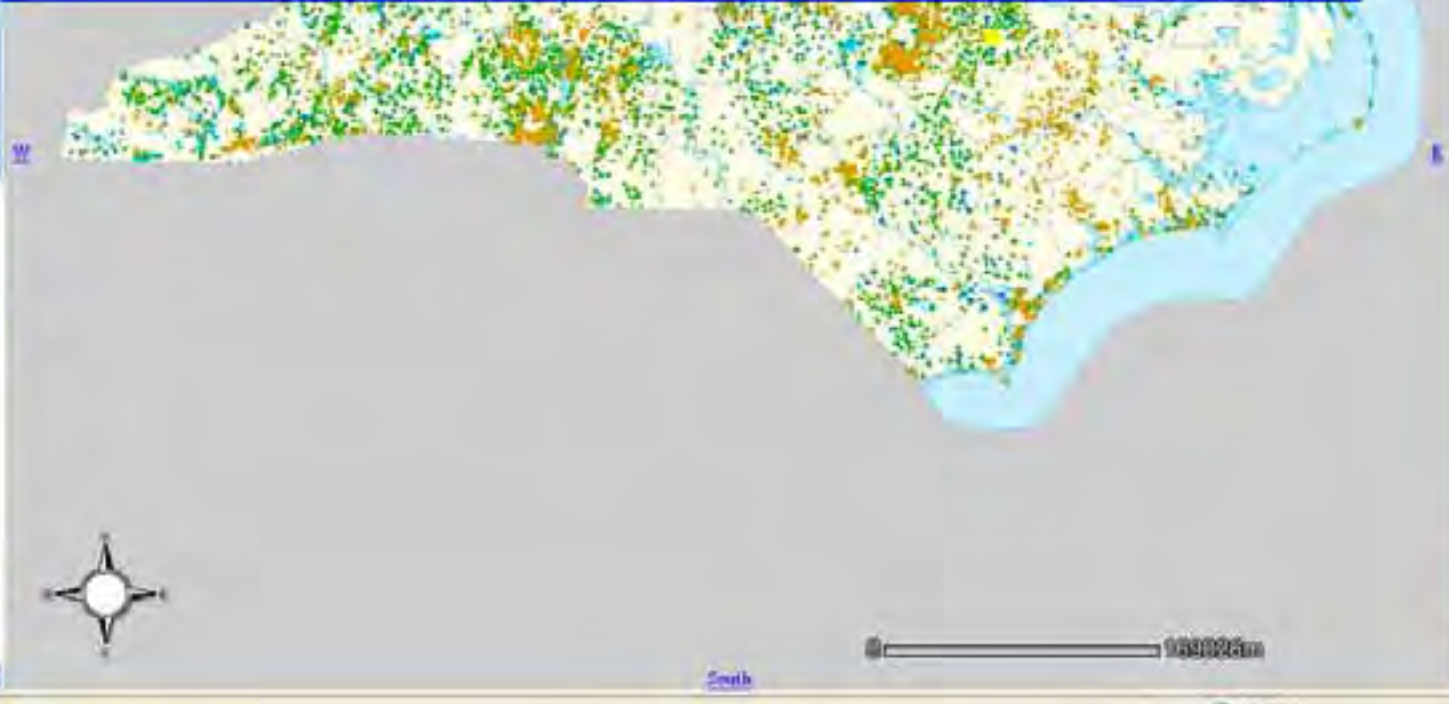
- Visible Active
- Animal Operations
 - ...

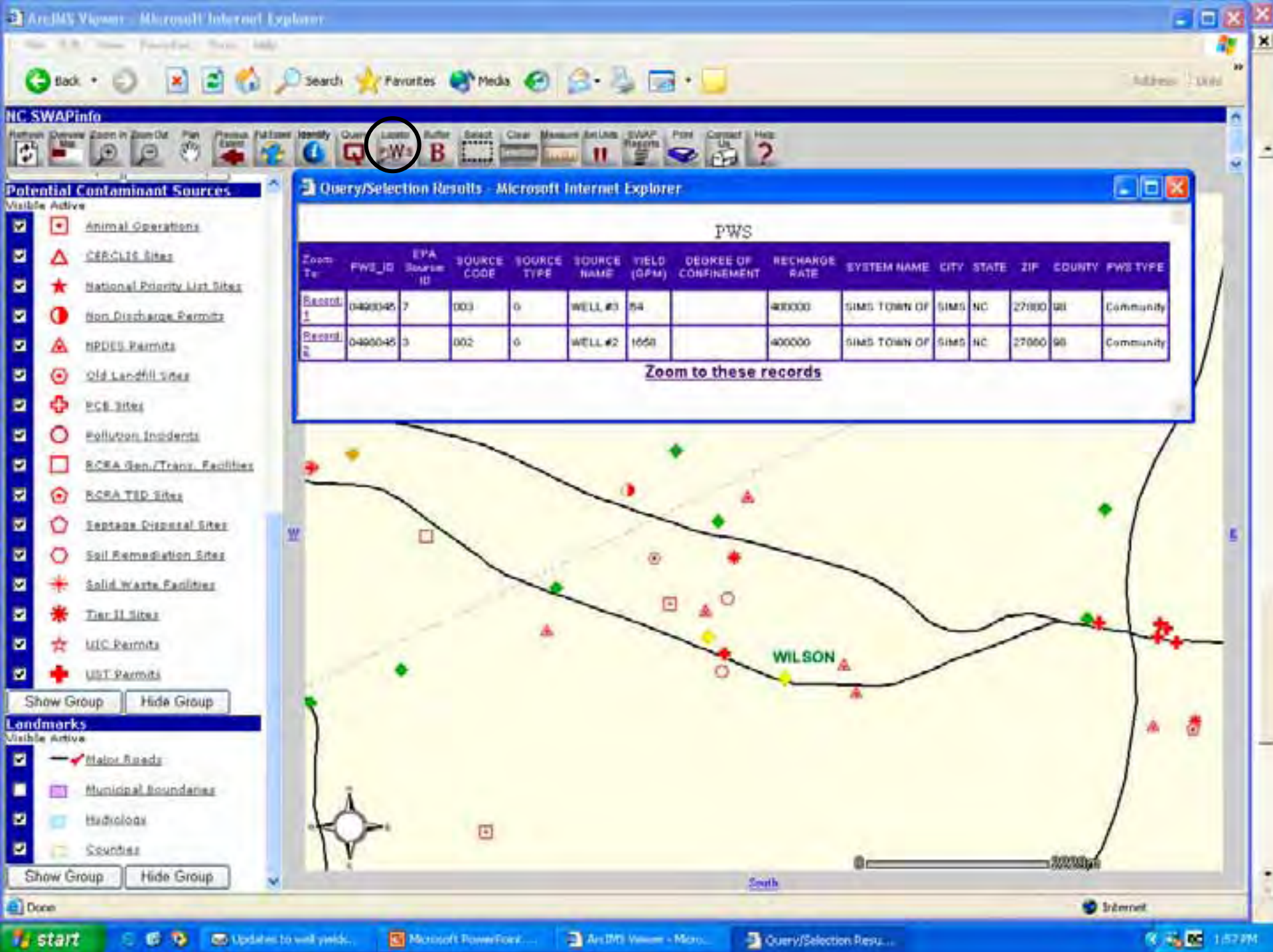
Query/Selection Results - Microsoft Internet Explorer

PWS

Record ID	PWS ID	EPA Source ID	SOURCE CODE	SOURCE TYPE	SOURCE NAME	YIELD (GPM)	DEGREE OF CONFINEMENT	RECHARGE RATE	SYSTEM NAME	CITY	STATE	ZIP	COUNTY	PWS TYPE
Record 1	0400040	1	003	Q	WELL #3	04		400000	SIMS TOWN OF	SIMS	NC	27000	98	Community
Record 2	0400040	2	002	Q	WELL #2	1000		400000	SIMS TOWN OF	SIMS	NC	27000	98	Community

Zoom to these records





NC SWAPinfo

- Home
- Desktop
- Zoom In
- Zoom Out
- Print
- Previous Layer
- Full Screen
- Identify
- Query
- Zoom PWS**
- Buffer
- Select
- Clear
- Measure
- Attributes
- SWAP Reports
- Print
- Connect Us
- Help

Potential Contaminant Sources

- Visible Active
- Animal Operations
 - CERCLA Sites
 - National Priority List Sites
 - Non-Discharge Permits
 - NPDES Permits
 - Old Landfill Sites
 - PCB Sites
 - Pollution Incidents
 - RCRA Gen./Trans. Facilities
 - RCRA TSD Sites
 - Sensitive Receptor Sites
 - Soil Remediation Sites
 - Solid Waste Facilities
 - Tier II Sites
 - UIC Permits
 - UST Permits
- Show Group Hide Group

Query/Selection Results - Microsoft Internet Explorer

PWS

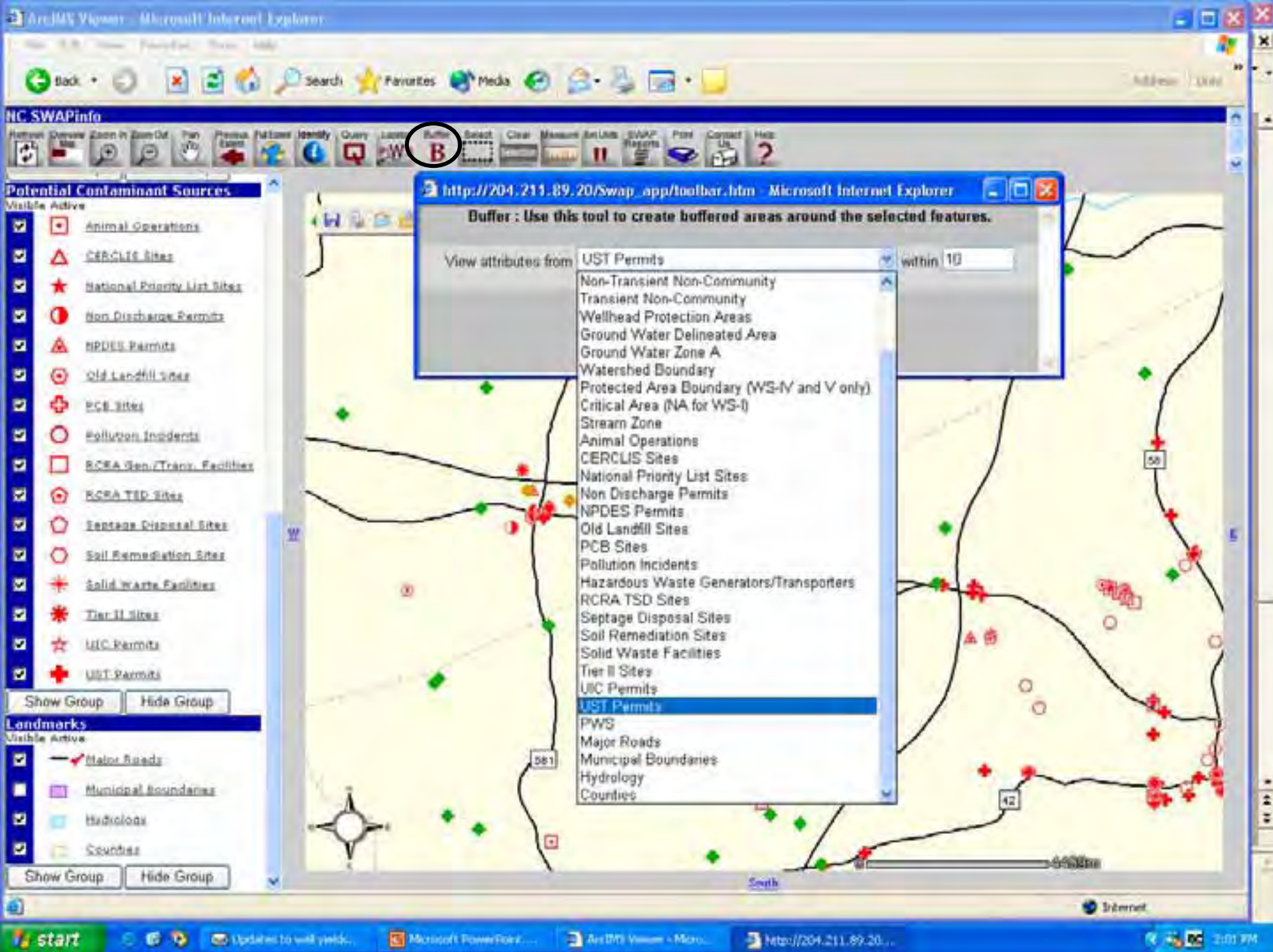
Zoom To	PWS_ID	EPA Source ID	SOURCE CODE	SOURCE TYPE	SOURCE NAME	YIELD (GPM)	DEGREE OF CONFINEMENT	RECHARGE RATE	SYSTEM NAME	CITY	STATE	ZIP	COUNTY	PWS TYPE
Record 1	0490045	7	003	0	WELL #1	54		40000	SIMS TOWN OF	SIMS	NC	27080	081	Community
Record 2	0490045	3	002	0	WELL #2	1650		40000	SIMS TOWN OF	SIMS	NC	27080	98	Community

[Zoom to these records](#)

Landmarks

- Visible Active
- Major Roads
 - Municipal Boundaries
 - Hydrology
 - Counties
- Show Group Hide Group





NC SWAPinfo

- Home
- Desktop
- Zoom In
- Zoom Out
- Full Screen
- Print
- Previous Layer
- Full Screen
- Identify
- Query
- Layers
- Buffer**
- Select
- Clear
- Measure
- Attributes
- SWAP Reports
- Print
- Connect Us
- Help

Potential Contaminant Sources

- Visible Active
- Animal Operations
 - CERCLIS Sites
 - National Priority List Sites
 - Non Discharge Permits
 - NPDES Permits
 - Old Landfill Sites
 - PCB Sites
 - Pollution Incidents
 - RCRA Gen./Trans. Facilities
 - RCRA TSD Sites
 - Septage Disposal Sites
 - Soil Remediation Sites
 - Solid Waste Facilities
 - Tier II Sites
 - UIC Permits
 - UST Permits

Landmarks

- Visible Active
- Major Roads
 - Municipal Boundaries
 - Hydrology
 - Counties

http://204.211.89.20/Swap_app/toolbar.htm Microsoft Internet Explorer

Buffer : Use this tool to create buffered areas around the selected features.

- View attributes from UST Permits within 10
- Non-Transient Non-Community
 - Transient Non-Community
 - Wellhead Protection Areas
 - Ground Water Delineated Area
 - Ground Water Zone A
 - Watershed Boundary
 - Protected Area Boundary (WS-IV and V only)
 - Critical Area (NA for WS-I)
 - Stream Zone
 - Animal Operations
 - CERCLIS Sites
 - National Priority List Sites
 - Non Discharge Permits
 - NPDES Permits
 - Old Landfill Sites
 - PCB Sites
 - Pollution Incidents
 - Hazardous Waste Generators/Transporters
 - RCRA TSD Sites
 - Septage Disposal Sites
 - Soil Remediation Sites
 - Solid Waste Facilities
 - Tier II Sites
 - UIC Permits
 - UST Permits**
 - PWS
 - Major Roads
 - Municipal Boundaries
 - Hydrology
 - Counties

