

Performance Based Cleanups

Florida Department of Environmental Protection

Bureau of Petroleum Storage Systems

Ferda Yilmaz



The 17th Annual UST/LUST National Conference
March 2005





Streamlined Processes

- *Streamlined Site Assessment (StSA)*
- *Streamlined Remediation*
 - *Performance Based Cleanups (PBC's)*



PBC Overview

Total Number of Agreements	356
Total Value	\$70,000 K
Avg. Cleanup Cost Tier-1	\$355 K
Avg. Cleanup Cost Tier-2	\$215 K
Site Closures	57
Time to Closure	2-6 yrs

Performance Based Cleanups (PBC's)

- *What is PBC?*
 - *How do we get there?*
 - *What are the proposal requirements?*
- *How do we price PBC's?*
 - *Team approach*
- *How do we negotiate PBC's?*
 - *Team approach*
- *How do we finalize PBC's?*



PBC Proposal

Cost Breakdown Requirements



- *Simplified*
- *Major Categories Only*
- *Line items for major costs*
- *No T&M detail*

PBC Proposal

Basic Proposal Elements

- *Baseline Sampling*
- *Remedial Action Plan*
- *Remedial Action Implementation*
- *Operation & Maintenance (O&M)*
- *Post Remedial Monitoring (PRM)*
- *Site Closure*



PBC Proposal Elements

- *Baseline Sampling*
 - *Required if Data > 9 months old*
 - *Include Key & Perimeter wells*
 - *Include all contaminants*



PBC Proposal Elements

- *Remedial Action Plan*
 - *May be included in PBC*
 - *Pilot test is optional*
 - *Consider level of effort for design*
 - *FDEP review requirements different*



PBC Proposal Elements

- *Remedial Action Plan Implementation*

- *Equipment:*

- *Trailer unit*

- *Fenced treatment compound*

- *Construction:*

- *Trenching length*

- *Materials*

- *Labor:*

- *Number of people*

- *Number of days*



PBC Proposal Elements

- *Operation & Maintenance*
 - *Number of years in O&M*
 - *Key & Perimeter well sampling plan*
 - *Reporting frequency*
 - *Utilities*
 - *Permits*
 - *Repairs*



PBC Proposal Elements

- *Post Remedial Monitoring*
 - *Key & perimeter well sampling plan*
 - *Reporting frequency*
 - *Consider rebounds*

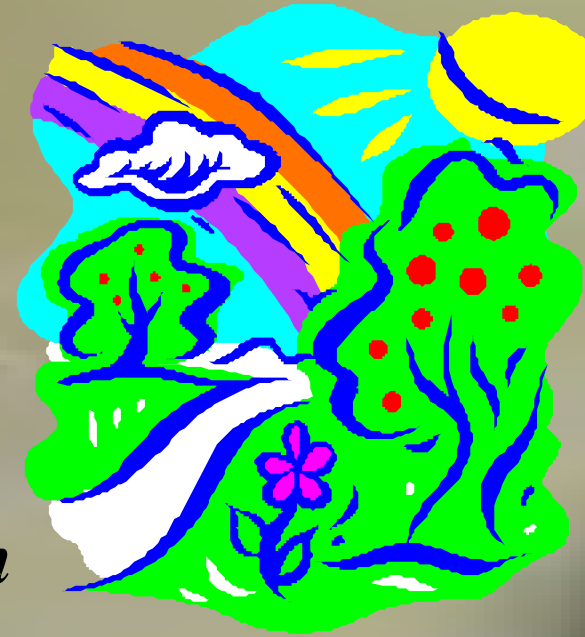


PBC Proposal Elements

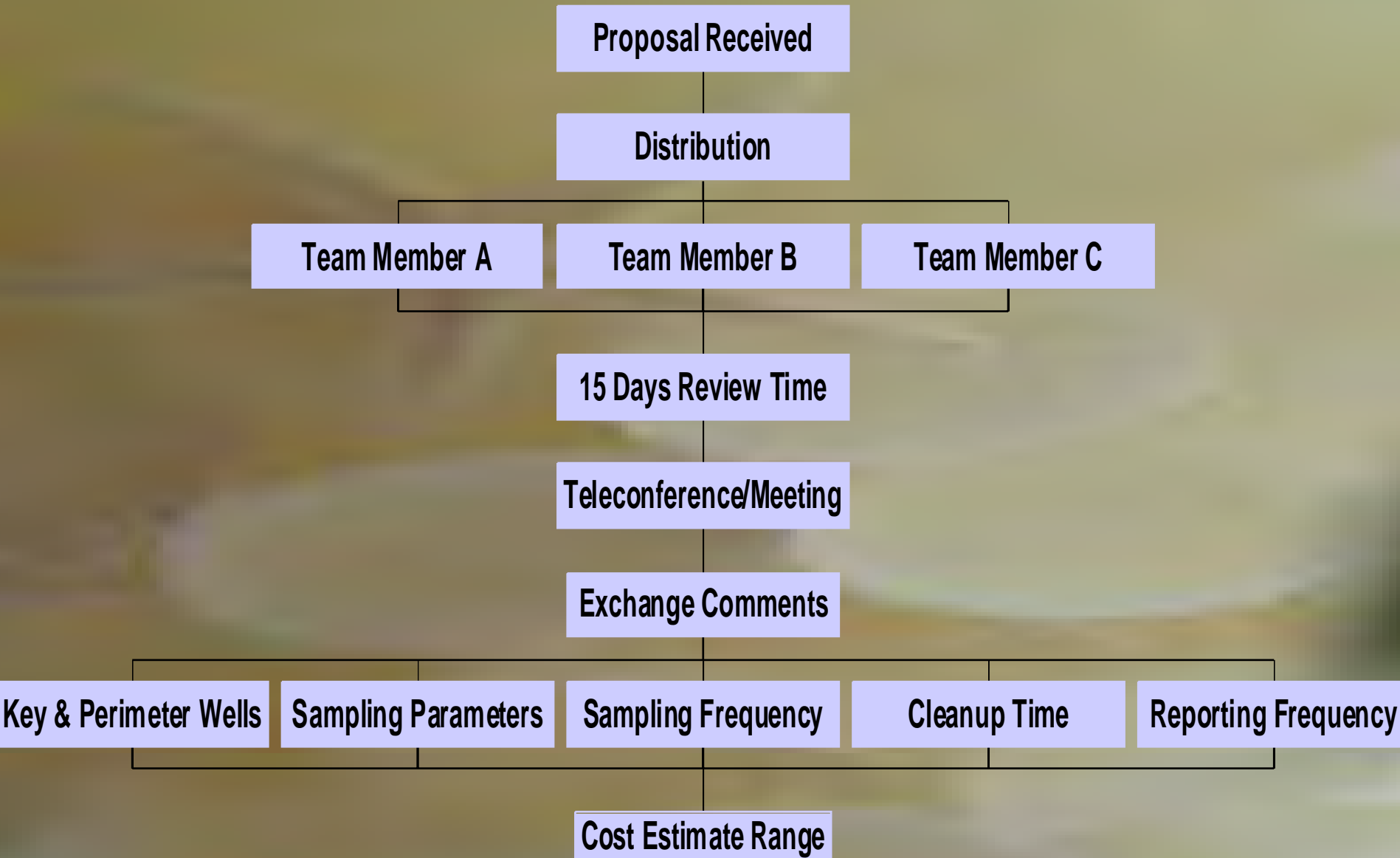
- *Site Closure*

- *Well abandonment*

- *Equipment demobilization*



Pricing & Negotiation Team



Negotiation Team

- *By e-mail*
- *Copy e-mail to team members*
- *Lay out changes*
 - *Number of key & perimeter wells*
 - *Sampling frequency*
 - *Sampling parameters*
 - *Reporting frequency*



PBC Template

This is a cleanup to:

CTLs

Tier 1/Elevated Target Levels

Target Levels:

Groundwater

GCTLs pursuant to 62-770

Soil

SCTLs pursuant to 62-770

Free Product

Free Product shall not be present

Surface Water

No Surface Water Body Affected by Contamination

Other

N/A

Key Wells (list):

MW-1, MW-7, MW-8, DMW-1

Sampling Frequency (in RA):

Quarterly

Parameters: BTEX + MTBE by EPA 8021

Perimeter Wells (list):

MW-3, MW-4, MW-10, MW-12

Sampling Frequency (in RA):

Quarterly

Parameters: BTEX + MTBE by EPA 8021

Other Sampling Requirements: _____

Other Analytical Requirements: _____

PBC Template

Baseline Data:

- To be collected within 30 days of contract execution Use Existing Data
(data must be sent to site manager prior to next activity)

Baseline Wells: MW-1, MW-2, MW-3, MW-4, MW-7, MW-8, MW-10,

Baseline Parameters: BTEX + MTBE by EPA 8021, PAHs by EPA 8270, TF

Reduction Measurement:

BTEX + MTBE Total Naphthalenes Other: _____

Reporting Frequency:

Quarterly Semiannually Other: _____

Other Reporting: _____



PBC Template

Agreement Ceiling Amount: \$234,567.00

Agreement Start Date: 8/1/2003

	<u>Milestones</u>	<u>Payment %</u>	<u>Payment Amt.</u>
Milestone 1:	<u>System Startup</u>	45% <input checked="" type="checkbox"/>	\$105,555.15
Milestone 2:	<u>50% Reduction</u>	10% <input checked="" type="checkbox"/>	\$23,456.70
Milestone 3:	<u>75% Reduction</u>	10% <input type="checkbox"/>	\$23,456.70
Milestone 4:	<u>90% Reduction</u>	10% <input type="checkbox"/>	\$23,456.70
Milestone 5:	<u>Target Levels, all Contaminants, all Mec</u>	10% <input type="checkbox"/>	\$23,456.70
Milestone 6:	<u>Maintain Target Levels</u>	10% <input type="checkbox"/>	\$23,456.70
Milestone 7:	<u>Site Rehabilitation Completion Order</u>	5% <input type="checkbox"/>	\$11,728.35
Milestone 8:	<u></u>	<input type="checkbox"/>	
Milestone 9:	<u></u>	<input type="checkbox"/>	
Milestone 10:	<u></u>	<input type="checkbox"/>	
	Total %:	100%	



Administrative Overhead



T&M

	WOs	Inv
RAP	1	2
RAC	1	4
O&M 1	1	5
O&M 2	1	5
O&M 3	1	5
PRM	1	5
SC	1	2

Total 7 28

PBC

	WOs	Inv
RAP	1	1
RAC (startup)	-	1
O&M (50%)	-	1
O&M (75%)	-	1
O&M (90%)	-	1
CTLs	-	1
Main. CTLs	-	1
SC	-	1
Verification	1	1

Total 2 9

More Streamlined Process

- *Bidding*
 - *Under State Lead Contracts*
 - *Single site bidding*
 - *Multiple site bidding*
 - *No negotiation needed*



More Information

- *<http://www.dep.state.fl.us/waste/categories/pcp/pages/pbc.htm>*
- *Ferda Yilmaz - 850/245-8885*



Questions?

