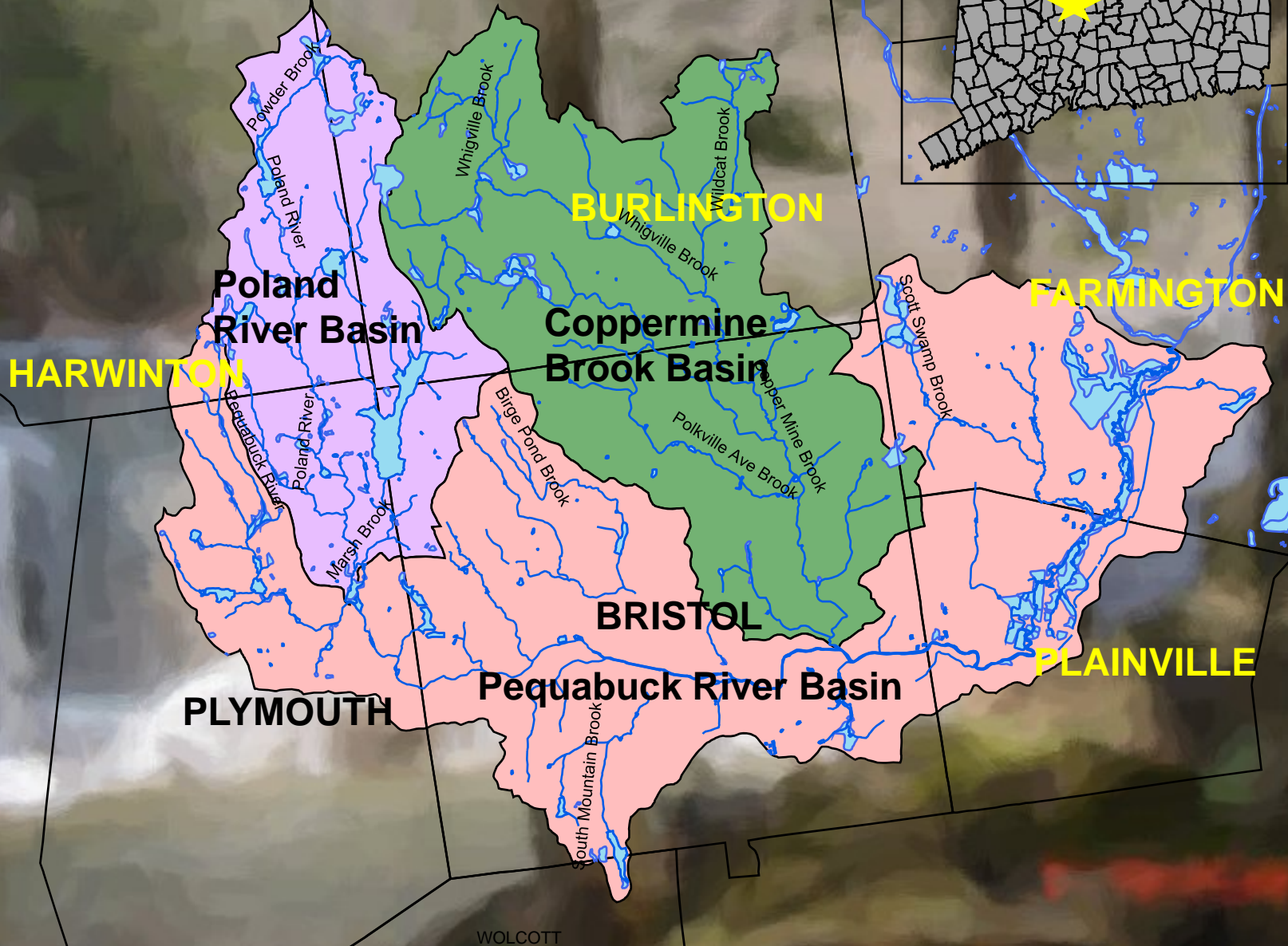


A painting of a forest scene with a river and trees. The style is impressionistic, with visible brushstrokes and a focus on light and color. The scene shows a river flowing through a dense forest of tall, thin trees. The water is a mix of blue and white, suggesting reflections and movement. The trees are rendered in various shades of green, brown, and white, with some dark spots that could be shadows or reflections. The overall mood is serene and natural.

# **Pequabuck River Watershed Management Plan**

**Partnership and Process**

# Pequabuck River Watershed



# Planning History

## Pequabuck River Action Plan – February 2000 (Sec. 604b funding)

Bristol Chamber of Commerce	Farmington Land Trust
Bristol Conservation Commission	Pequabuck River Watershed Assn.
Bristol Land Trust	Plainville Chamber of Commerce
Bristol Regional Environmental Center	Plainville Conservation Commission
Bristol Water Pollution Control Authority	Plainville Historic Center
Central Conn Regional Planning Agency	Plymouth Historical Society

## State of the Watershed Report – July 2004 (DEP Watershed Grant)

Central Conn Regional Planning Agency (CCRPA)  
Farmington River Watershed Association (FRWA)  
Pequabuck River Watershed Association (PRWA)

## Pequabuck River Watershed Mgmt Plan – August 2005 (Sec. 319 funds)

Bristol Conservation Comm.	Farmington PZC	Town Staff – Farmington
Bristol Garden Club	FRWA	USDA /NRCS
Burlington Land Trust	Harwinton PZC	Watershed Citizens
Burlington IW Comm.	Plainville Conservation Comm.	
CCRPA	PRWA	
Farmington Conservation Comm.	Plymouth IW Comm.	
Farmington Land Trust	Town Staff - Bristol	

# Pequabuck River Watershed Management Plan

Ingredients of our Partnership Stew:



1. Move the meetings around the watershed
2. Enlist local politicians as hosts
3. Liberally sprinkle acknowledgements
4. Tasks for everybody
5. Email agendas and meeting notes to everyone on the mailing list, not just meeting participants
6. Bring food and drinks

# Pequabuck River Watershed Management Plan

## Overall Goal

"Develop an affordable and effective watershed management plan that can be implemented by the watershed towns."

# Pequabuck River Watershed Management Plan

Actions

Focus Areas

Implementers

Action Matrix		Implementing Parties																
Action	Goals that the Action Supports				Implementing Parties													
	Land Use	Habitat	Water Quality	Protected Open Space	FRWA	FRWA	COOP	DFP	CONSERVATION COMMISSION	PCOs	DPNs	TOWN COLLEGE	LOCAL	BOA	OUTRIG CLUBS	LAND TRUSTS	HISTORIC SOCIETIES	DMC
1) Create and promote awareness of Pequabuck River Watershed resources through education efforts designed for the public.	P	P	P	T	⊗	⊗	⊗	⊗					⊗	⊗	⊗			
2) Use Best Management Practices (BMPs).	P	P	P	P							⊗							
3) Encourage Watershed towns to incorporate policies and strategies in their plans of conservation and development and zoning and subdivision regulations to preserve water quality and protect open space and habitats when considering land development in the Watershed.	P	P	P	T	⊗	⊗	⊗		⊗							⊗		
4) Reach out and create partnerships with other groups to disseminate information on water quality, protected open space, fish and wildlife habitat and resource impacts of land use.	P	P	P	P	*	*								⊗	⊗			
5) Work with towns to create or protect vegetated, riparian buffers alongside the Pequabuck River and its key tributaries to enhance wildlife habitat, improve water quality and encourage groundwater recharge and recreational opportunity.	P	P	P	P					⊗	⊗	⊗	⊗						

# Pequabuck River Watershed Management Plan

## Implementation

<u>Watershed Town</u>	<u>Date Endorsed</u>
Plainville	3/18/06
Bristol	6/13/06
Plymouth	11/14/06
Farmington	1/9/07
Burlington	3/11/08





*Questions?*

<http://www.ccrpa.org/environment.htm>